

HAAS TM-2P

4 axes vertical machining center



Manufacture	HAAS
Type	TM-2P
Year of manufacture	2015
Machine number	1122194
Control	HAAS

ONLY ca. 1.450 spindle hours

INDEX

Equipment	3
Technical data & Description	4
Flyer	6
Layout	8
Machine pictures	10

EQUIPMENT

CT Option

The tool changer with 10 magazine places delivered on this machine accept CAT, DIN-69871-1 and ISO-7388 / 1 Stil tool holder

IPS Intuitive programming system

Coolant pump (93 W) and coolant tank

Upgrade-package für coolant pump

186 W, 22,7 l/min at 0,7 bar

Tank with 57 liters capacity

Activation by m-code or keyboard

with Loc-Line coolant hose and shut-off valve

210 mm Rotary Table consisting of:

210-mm-Servo-rotary table (8,3")

Requires HAAS milling machine with drive for the 4. axis for operation with full 4. axis or rotary table control unit for independent operation.

Drive and wiring for the 4. axis

Enables multi-sided machining with a fully integrated rotary table or index table from HAAS designed as a 4. axis

Increases productivity and reduces set-up effort

Intuitive wireless measuring probe system

Wireless measuring probe for tool measurement, workpiece measurement and tool breakage control from RENISHAW.

Including the options macro, spindle orientation and coordinate rotation

Chip conveyor

User guide / Documentation

Machine parameters on storage medium

TECHNICAL DATA

	Verfahrwege	METRIC
X-Achse		1016 mm
Y-Achse		406 mm
Z-Achse		406 mm
Abstand Spindelnase – Maschinentisch (~ Max.)		508 mm
Spindelnase zum Tisch (~ min)		102 mm

	Spindle	S.A.E	METRIC
Max. Nennleistung		7.5 hp	5.6 kW
Max. Geschwindigkeit		6000 rpm	6000 rpm
Max. Drehmoment	45.0 Nm @ 1200 rpm		
Antriebssystem	Direct Speed, Belt Drive		
Kegel	CT or BT 40		
Lagerschmierung	Grease Packed		
Kühlung	Air Cooled		

	Tisch	METRIC
Länge		1466 mm
Breite		267 mm
Breite der T-Nuten		15.90 mm to 16.00 mm
Mittenabstand der T-Nuten		102 mm
Anzahl der T-Nuten in Grundausstattung		3
Max. Tragfähigkeit auf Tisch (gleichmäßig verteilt)		454 kg

	Feedrates	METRIC
Max. Vorschub für Zerspanen		10.2 m/min
Eilgänge an X		10.2 m/min
Eilgänge auf Y		10.2 m/min
Eilgänge an Z		10.2 m/min

	Axis Motors	METRIC
Max. Schubkraft X		8896 N
Max. Schubkraft Y		8896 N
Max. Schubkraft Z		8896 N

DESCRIPTION

Die Fräsmaschinen für den Werkzeug- und Vorrichtungsbau der Modellreihe TM-P von Haas sind preiswert und einfach zu bedienen und bieten die Präzisionssteuerung des Haas CNC-Systems. Sie verwenden SK-40-Standardwerkzeuge und sind einfach zu erlernen und zu bedienen. Kenntnisse des G-Codes sind nicht erforderlich. Sie sind die perfekte Wahl für Schulen und Unternehmen, die auf CNC umsteigen, oder für alle, die eine große und kostengünstige Maschine mit großen Verfahrwegen suchen.

Die TM-P-Modelle verfügen über einen automatischen Werkzeugwechsler mit 10 Taschen, eine schnellere Spindel und höhere Eilgänge.

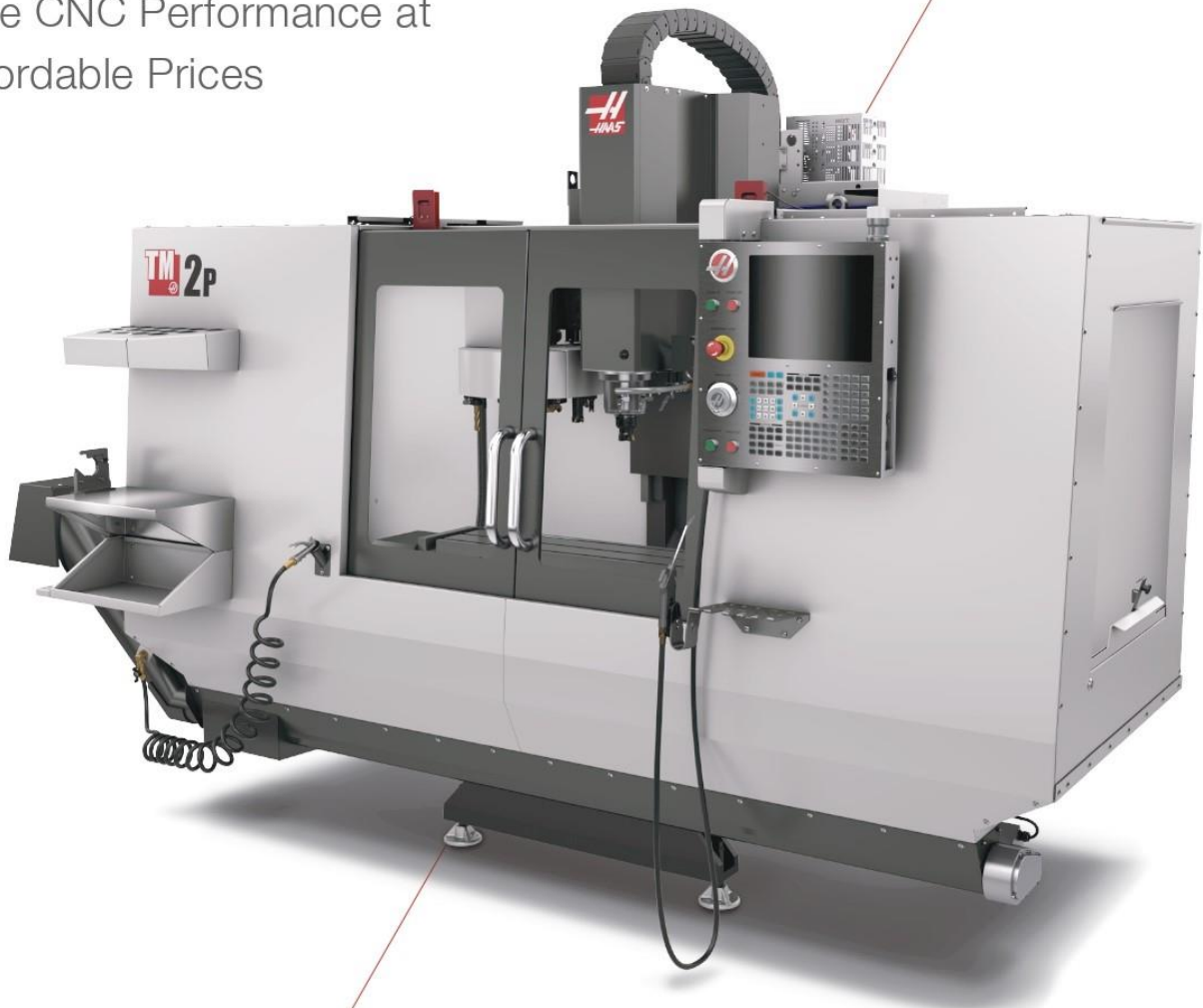
Die TM-2P bietet höhere X- und Y-Achsenverfahrwege als die TM-1P.

- Kann an einem 1- oder 3-Phasen-Netzanschluss betrieben werden.
- Dialogprogrammiersystem
- Bedienerfreundliche Haas Steuerung
- Erschwingliche komplette CNC-Fähigkeiten
- Fernüberwachung mit HaasConnect
- Hergestellt in den USA



Vertical Mills: Toolroom Series

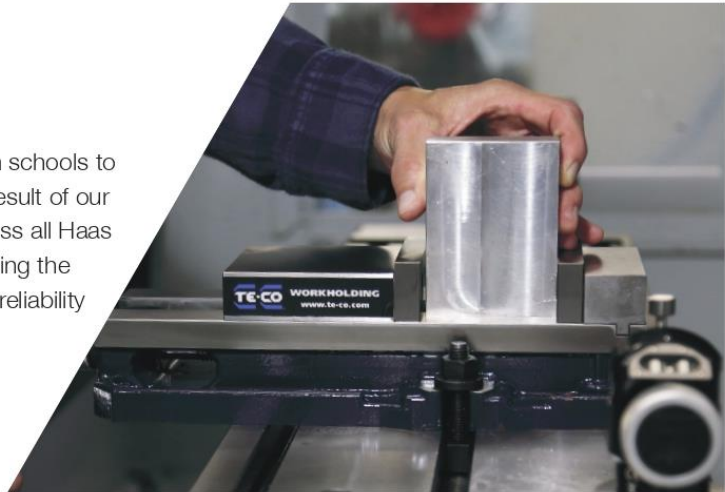
True CNC Performance at
Affordable Prices



www.HaasCNC.com / Made with Pride in the USA

Toolroom Series

Haas Toolroom Mills are found everywhere – from schools to high-end production shops. Their versatility is a result of our commitment to using common components across all Haas machine tools. This results in all machines, including the Toolroom Mills, benefitting from improvements in reliability and performance.



40 / **3/4/5** / **4k-10k** / **1-20**
TAPER AXIS RPM TOOL CAPACITY

Large Travels. Big Capabilities. Small Price.



SPINDLES

Reliable, high-performance spindles – designed and manufactured by Haas.

STANDARD

- 4000-rpm, Belt Drive (TM)
- 6000-rpm, Belt Drive (TM-P)

OPTIONAL

- 6000-rpm, Belt Drive (TM)
- 10,000-rpm, Belt Drive, Greased (All)



TOOL CHANGERS

Capacity and speed to minimize your cycle times and fit your budget.

STANDARD

- No Tool Changer (TM)
- 10-Station Carousel (TM-P)

OPTIONAL

- 20-Station Carousel (TM-2P/3P)



CHIPS & COOLANT

Features and options to help your machine do what it does best – make chips efficiently.

- Programmable Coolant Nozzle*
- High-Flow Coolant Pump*
- Automatic Air Gun*
- Chip Auger*



HAAS CONTROL

Faster, smarter, and better than ever, with the goal of keeping your spindle turning.

- HaasConnect Remote Monitoring
- Ethernet Connectivity
- User-Definable Macros*
- DWO/TCP*
- Expandable Memory*
- WiFi Connectivity*

Available Models

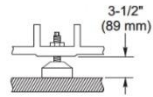
TM-1	TM-1P	TM-2	TM-2P	TM-3	TM-3P
30" x 12" x 16"	30" x 12" x 16"	40" x 16" x 16"	40" x 20" x 16"	40" x 20" x 16"	40" x 20" x 16"

BUILD & PRICE yours
 at www.HaasCNC.com

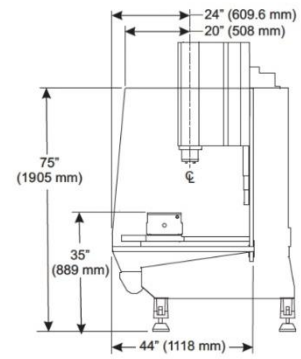
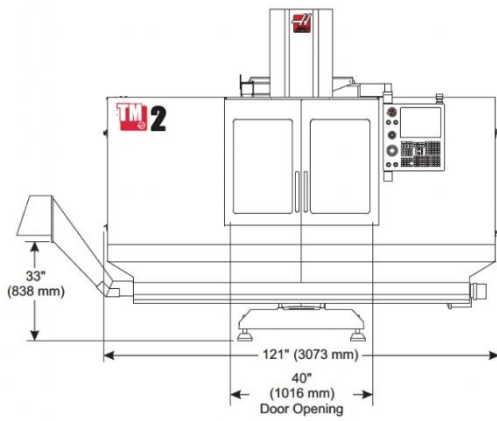
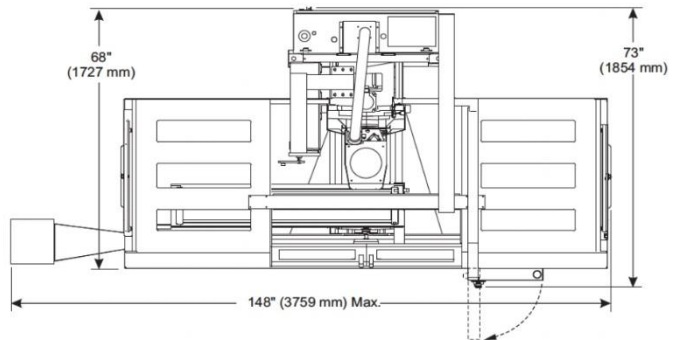
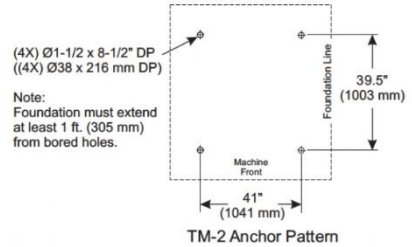
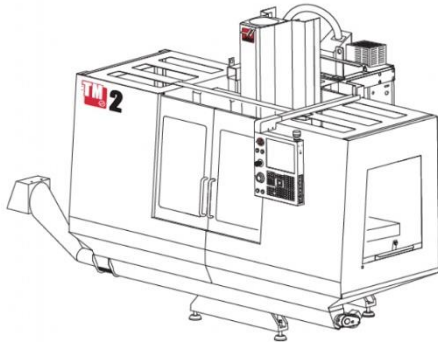


V20180208 PL1. Some items shown are optional. Specifications subject to change without notice. *Optional feature.

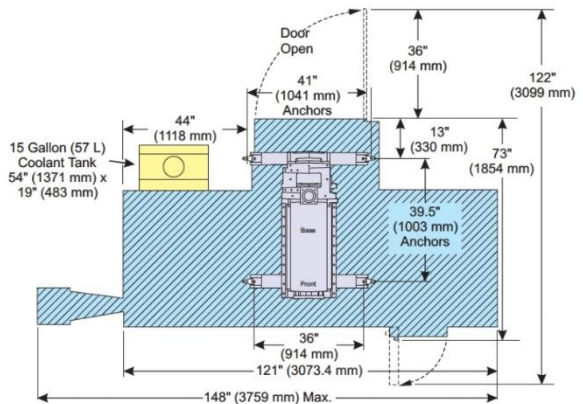
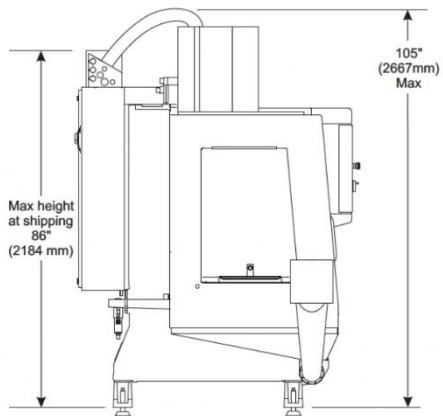
LAYOUT



4X Leveling Pad Pin Dimension



TM-2 Sheet Metal Removed for Clarity

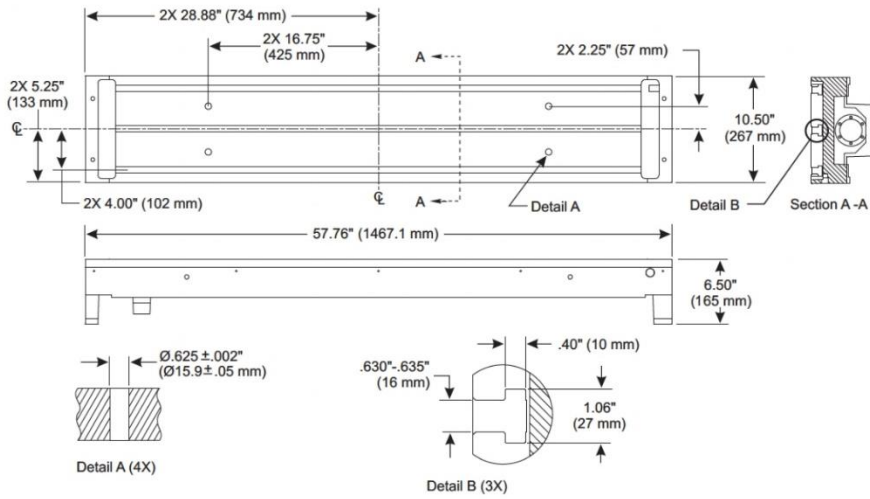


TM 2/TM 2P Revision F
Page 1 of 2
Mar, 2016

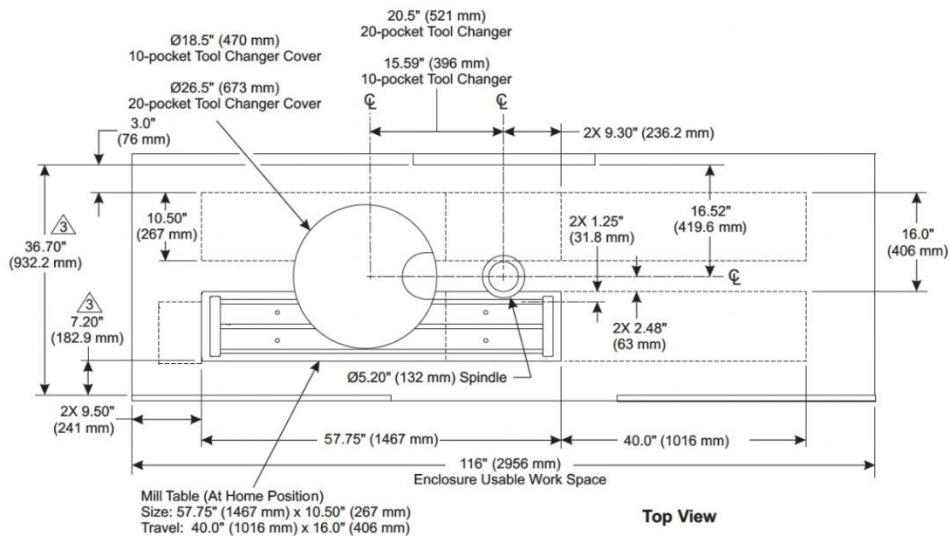
Note: Drawing is formatted for 11" x 17"
Drawing will print to 8.5" x 11"

*Due to continual product improvements, machine dimensions are subject to change without notice.

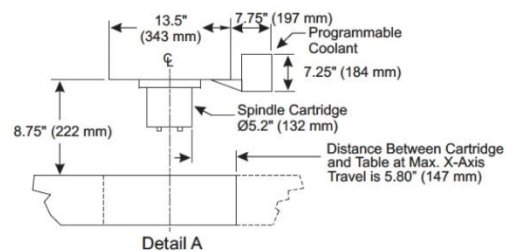
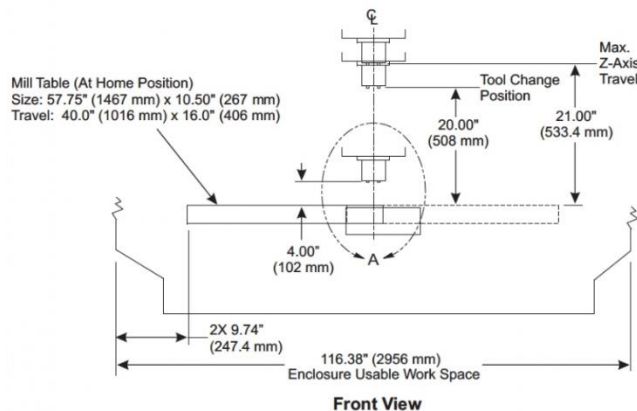
TM-2 Enclosure Work Space



TM-2 Table Dimensions



- Notes: 1. Table position(s) at max X and Y travels.
 2. Measurements are from the edge of Mill table to nearest obstruction (ie. Enclosure, Waycover, Doors, etc.).
 Dimensions are reduced as height above Table increases.
 3. ie. Front of enclosure is sloped 5° inward from bottom to top. dimensions shown are at Table top height.



TM 2/TM 2P Revision F
 Page 2 of 2
 Mar, 2016

Note: Drawing is formatted for 11" x 17"
 Drawing will print to 8.5" x 11"

MACHINE PICTURES



Thank you very much for your interest

maschinen  Team



We do not guarantee the accuracy and completeness of these documents. We further do not assure any characteristics and qualities. The named machine, which is up for sale, is used.