

HAAS VF 2 SSHE

5-axes universal machining center with Swivel-rotary table TR160 (5XB)



Manufacture	HAAS
Type	VF2 SSHE
YOM	2006
Control	FANUC / HAAS
Machin number	47110
Travels	X – 762 mm / Y – 406 mm / Z – 508 mm

INDEX

Equipment	3
Technical data	4
Machine pictures	6
Machine layout	7
Space requirement and transport	10
Brochure	12

EQUIPMENT

HAAS CNC-swivel-rotary table TR1605XB	
Mounting plate	Ø 160 mm
Swivel range of the A-axis	+/- 120°
Turning range of the B-axis	360°
5. axis card brushless 5AXBLS5	
Preparation of the control for the use of a 5 th axis card completely	
Spindle motor	22,3 KW
Spindle speed	12.000 rpm
Rapids speed X, Y, Z	35,5 m/min
Feed speed X, Y, Z	21,1 m/min
Tapping without compensating chuck	
Coolant system with programmable coolant nozzle incl. spiral chip conveyor	
Coordinate system rotation / scaling	
Preparation for 4 th axis for rotary table	(without motor)
MACRO - programming	
Visual Quick Code programming support	
User guide / Documentation	
Machine parameters on CD	

TECHNICAL DATA

	<i>Metric</i>	<i>S.A.E.</i>
Travels		
X axis	762 mm	30"
Y axis	406 mm	16"
Z axis	508 mm	20"
Spindle nose – machine table (max)	610 mm	24"
Spindle nose – machine table (min)	102 mm	4"
Table		
Length	914 mm	36"
Width	356 mm	14"
T-slot width	16 mm	5 / 8"
T-slot center distance	125 mm	4.92"
Number of T-slots	3	3
Max. weight on table (evenly distributed)	680 kg	1.500 lb
Spindle		
Max. rating	22.4 kW	30 hp
Max. speed	12.000 rpm	12.000 rpm
Max. torque	122 Nm @ 2000 rpm	90 ft-lb @ 2000 rpm
Drive system	inline Direct Drive	Inline Direct Drive
Taper	SK 40	SK 40
Bearing lubrication	Air / Oil Injection	Air / Oil Injection
Cooling	Liquid Cooled	Liquid Cooled
Feedrates		
Rapids on X	35.6 m/min	1.400 in/min
Rapids on Y	35.6 m/min	1.400 in/min
Rapids on Z	35.6 m/min	1.400 in/min
Max. cutting	21.2 m/min	833 in/min

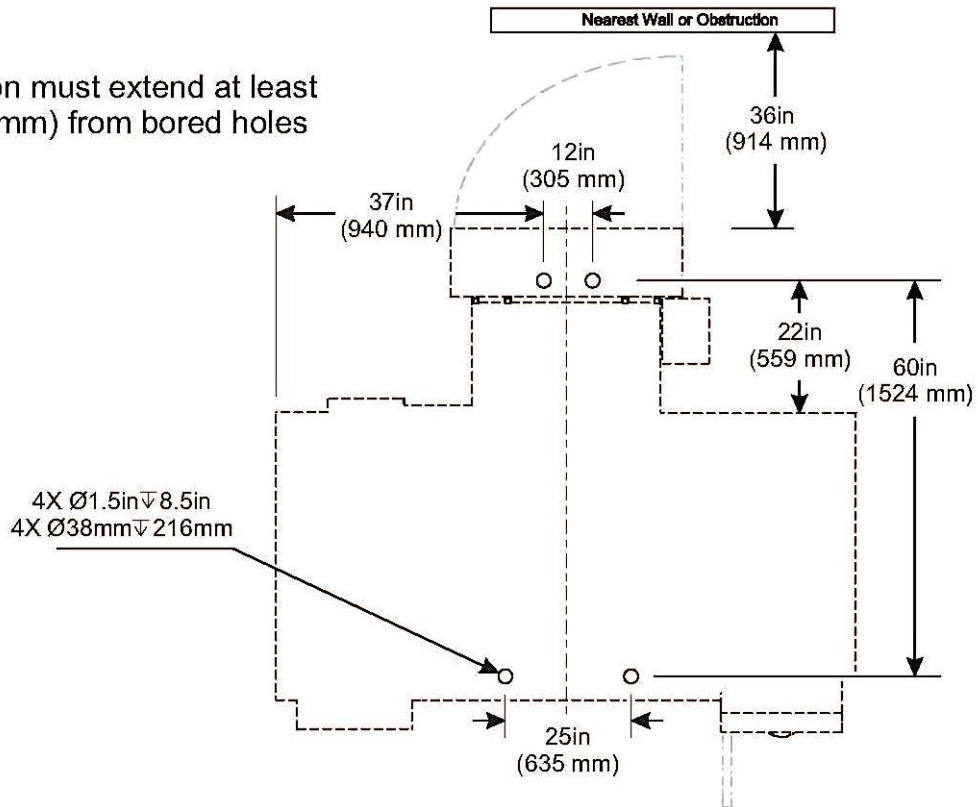
	<i>Metric</i>	<i>S.A.E.</i>
Axis motors		
Max. thrust X	8.874 N	1.995 lb
Max. thrust Y	8.874 N	1.995 lb
Max. thrust Z	13.723 N	3.085 lb
Tool changer		
Type	SMTC	SMTC
Capacity	24 + 1	24 + 1
Max. tool diameter (full)	76 mm	3"
Max. tool diameter (adjacent empty)	127 mm	5"
Max. Tool length (from gage line)	279 mm	11"
Max. tool weight	5 kg	12 lb
Tool-to-tool (avg)	1.6 sec	1.6 sec
Chip-to-chip (avg)	1.8 sec	1.8 sec
General		
Air required	113 L/min, 6.9 bar	4 scfm, 100 psi
Coolant capacity	208 L	55 gal

MACHINE PICTURES

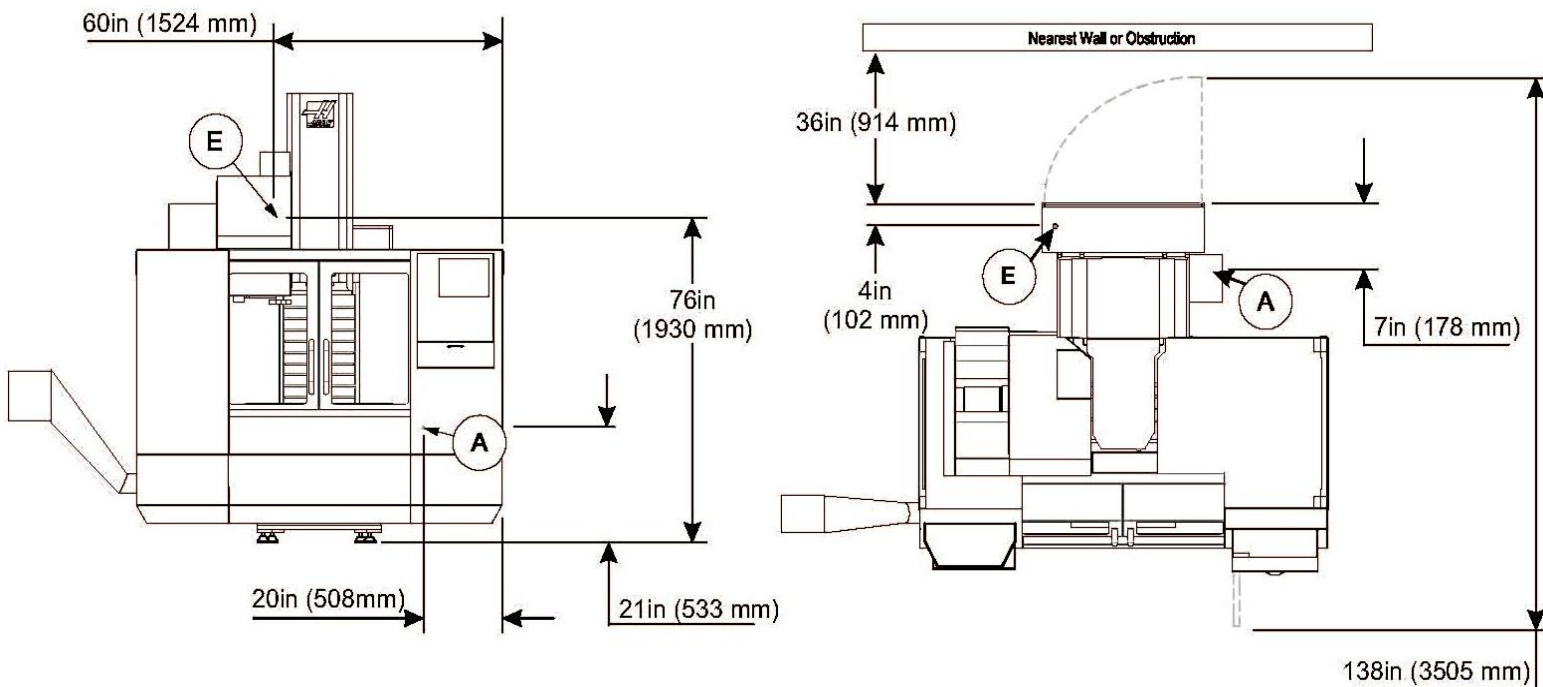


MACHINE LAYOUT

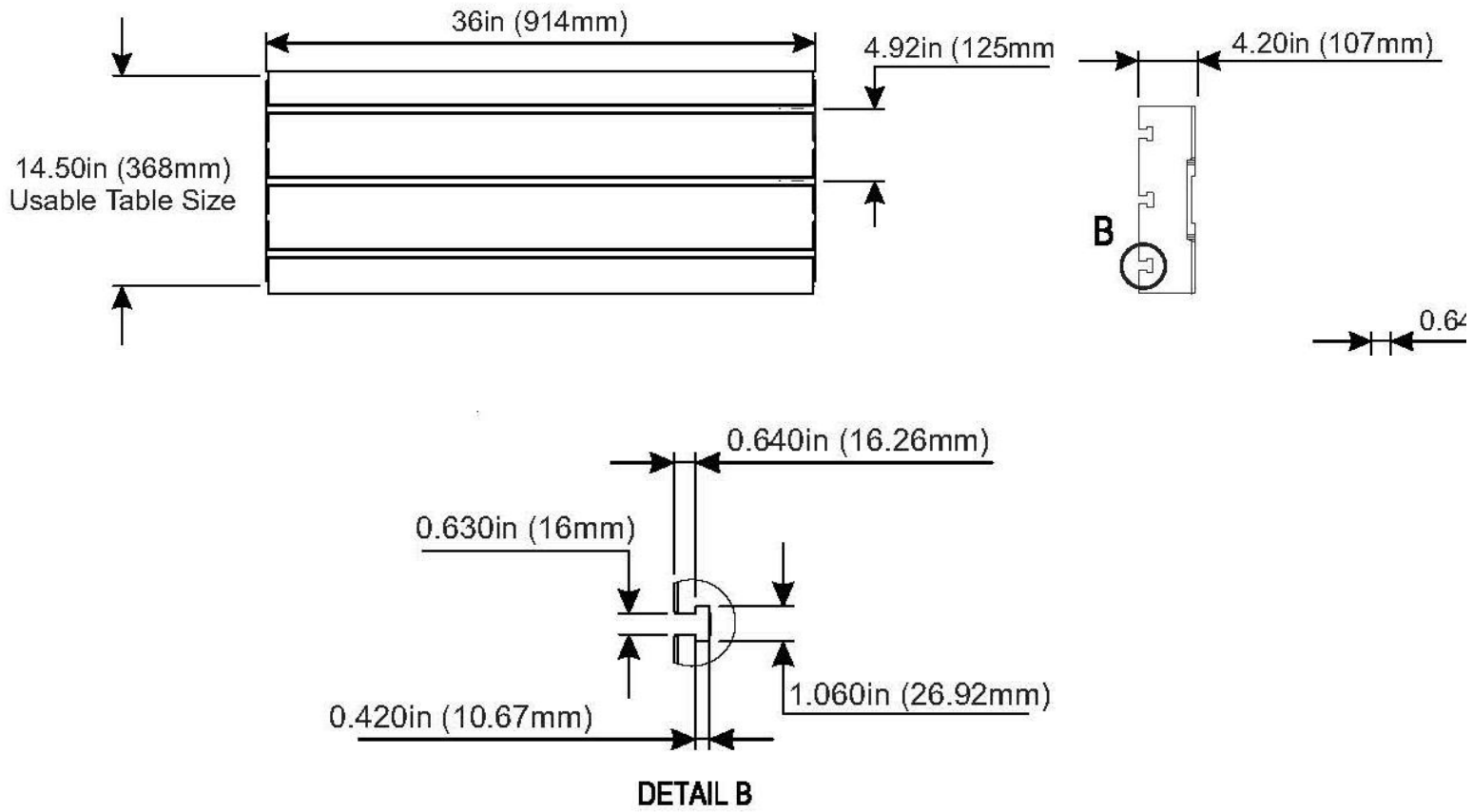
Note:
Foundation must extend at least
12in (305mm) from bored holes

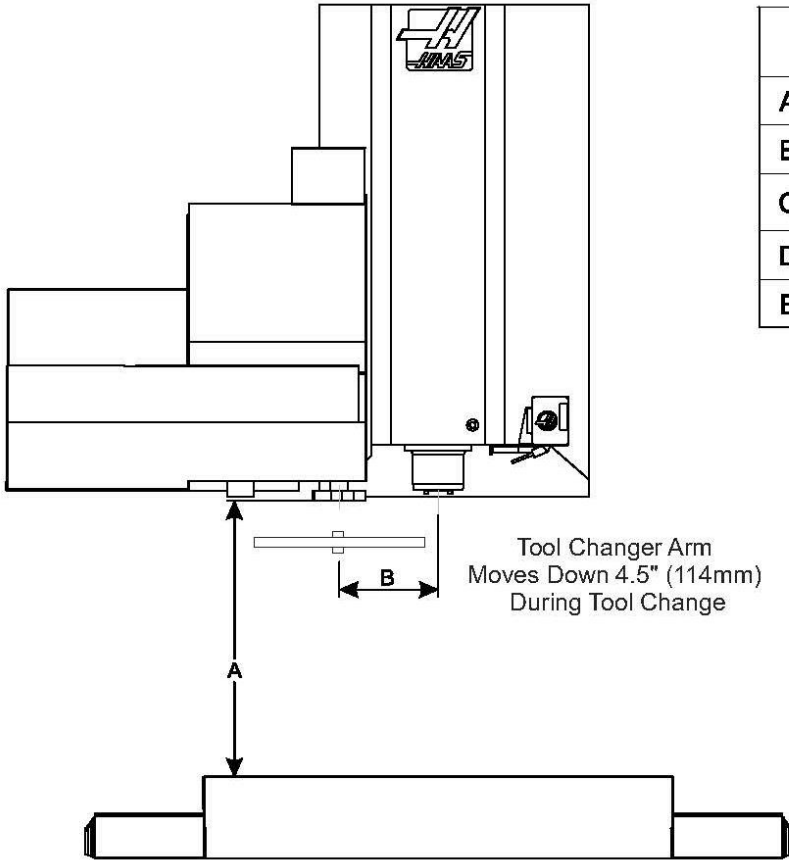


- Ⓔ Electrical Connection
- Ⓐ Air Connection

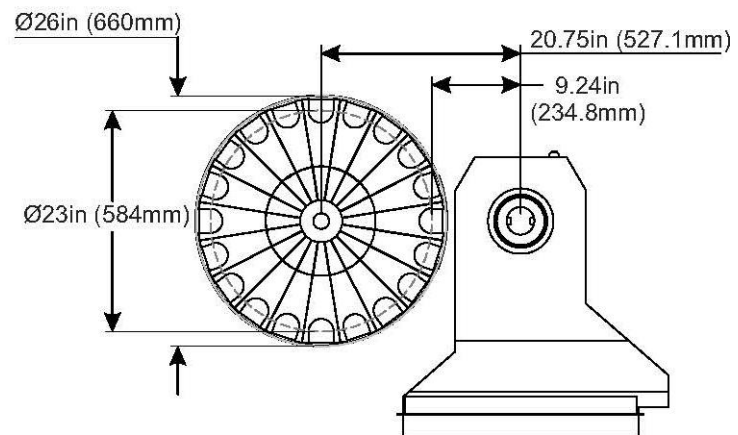
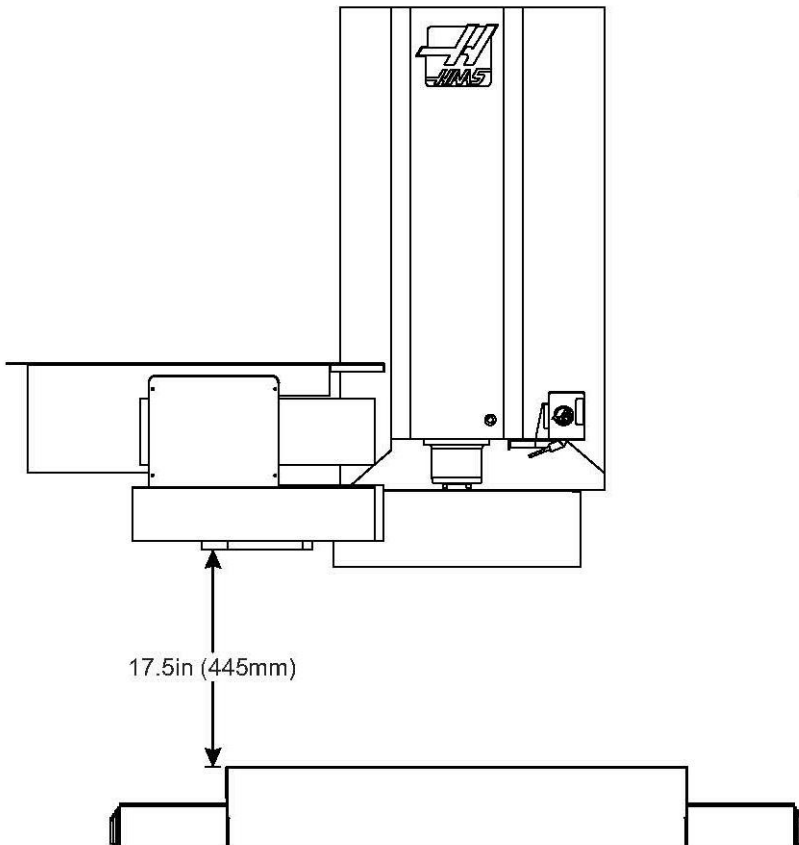
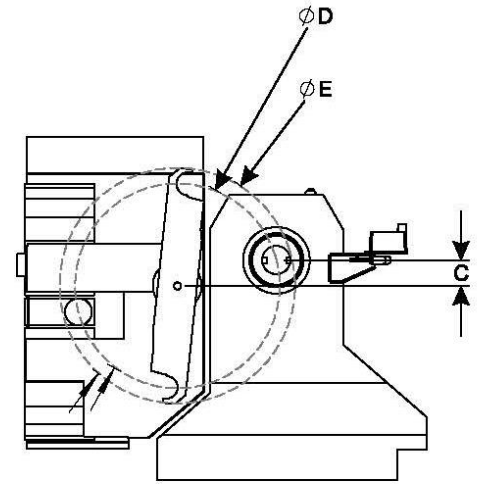


TABLE



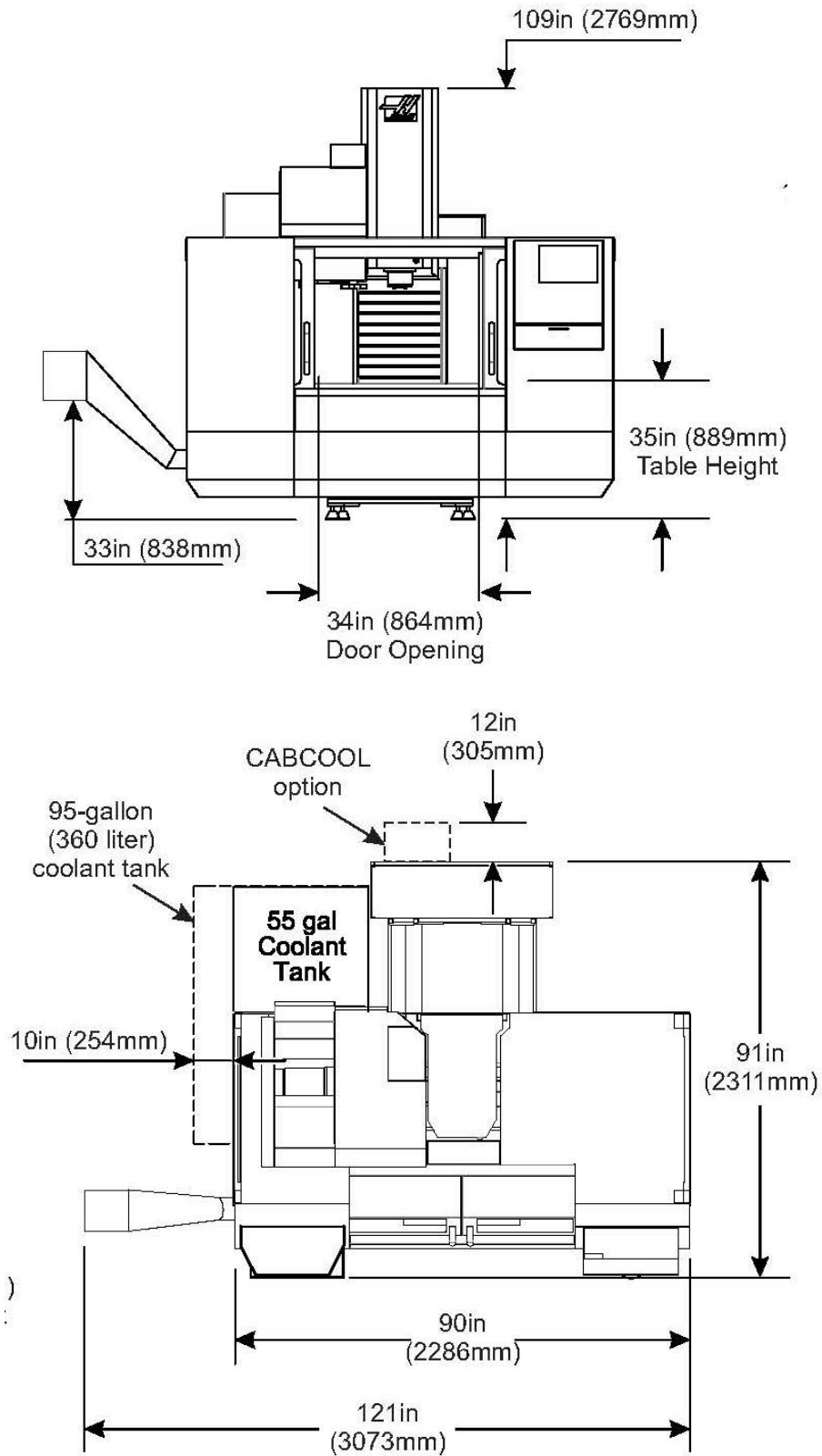


24+1 Pocket		
A	22.5in	572mm
B	10in	254mm
C	3in	76mm
D	21in	533mm
E	24in	610mm

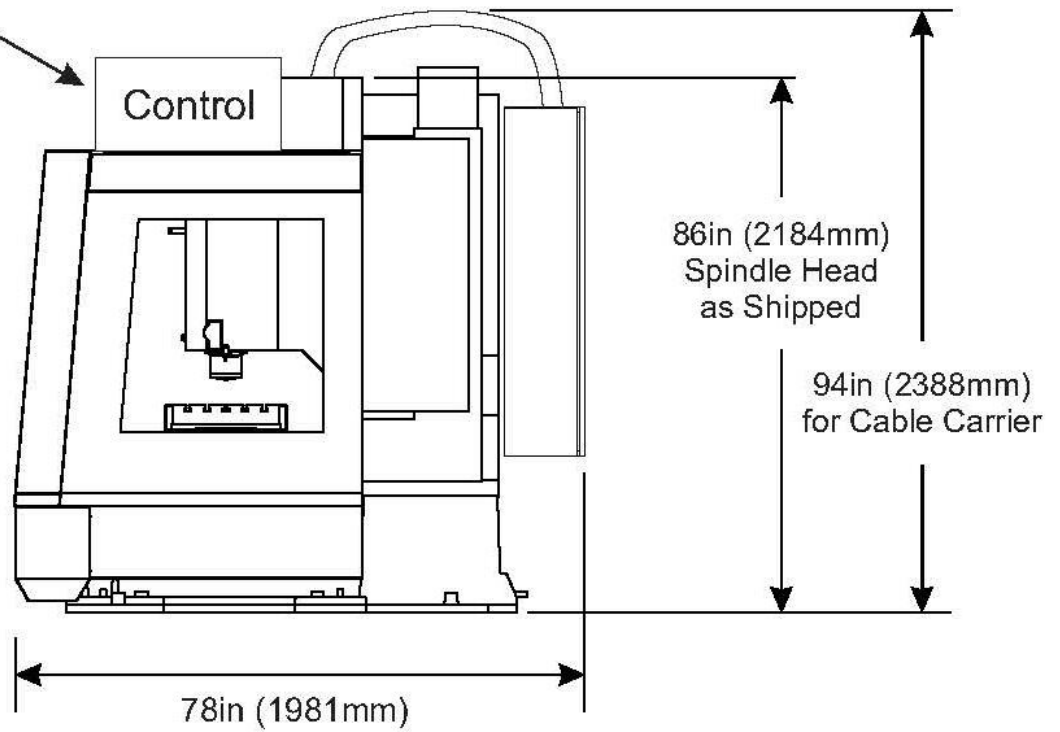


The Umbrella Tool Changer moves in towards the spindle to do a tool change.

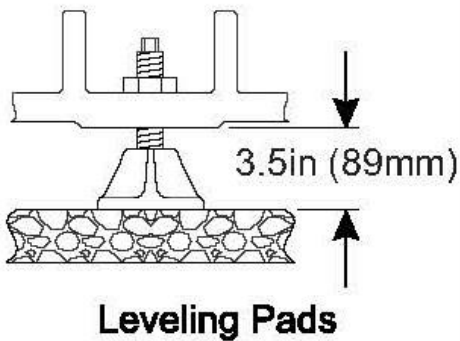
SPACE REQUIREMENT and TRANSPORT



Convenience package removed;
Control mounted on top
for shipping



Shipping height (94"/2388mm) and width (78"/1981mm) shown
Contact your local Haas Factory Outlet
for further breakdown information



[Special Series]

Haas SS Series

The Super-Speed VMCs




1. ENHANCED High-speed side-mount tool changer (24+1 tools) swaps tools in just 1,6 seconds

2. ENHANCED Inline direct-drive spindle features 12 000 rpm and on-the-fly wye-delta switching

3. ISO standard G-code programming through the user-friendly, full-function Haas CNC control

Warranty: 1 Year Parts and Labor

[Standard Features]

- 22,4 kW Vector Dual Drive
- 12 000-rpm 40-Taper Spindle
- Inline Direct Drive
- High-Speed Rapids
- High-Speed Side-Mount Tool Changer
- Rigid Tapping
- 38 cm Color LCD Monitor w/USB Port
- Power Failure Detection Module
- 1 GB Program Memory
- User-Friendly Haas Control
- ISO Standard G-Code Programming
- Made in the USA

[Options] partial list

- 15 000-rpm 40-Taper Spindle
- Chip Auger System¹
- Programmable Coolant Nozzle¹
- Haas Intuitive Programming System
- Remote Jog Handle¹
- 32/64 GB Program Memory
- 4th- and 5-Axis Drives
- Coordinate Rotation & Scaling
- User-Definable Macros
- High-Speed Machining w/Look-Ahead

¹Standard on VF-6SS.



Haas Automation Europe | www.HaasCNC.com | +32 2 522 99 05 | Made in U.S.A.

Specifications subject to change without notice. Not responsible for typographical errors. Machines shown with optional equipment. Product appearance may differ.

[Technical Specifications]

Haas SS Series

The Super-Speed VMCs

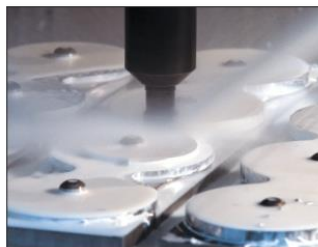


The Haas high-performance Super-Speed vertical machining centers provide the high spindle speeds, fast rapids and quick tool changes necessary for high-volume production and reduced cycle times.

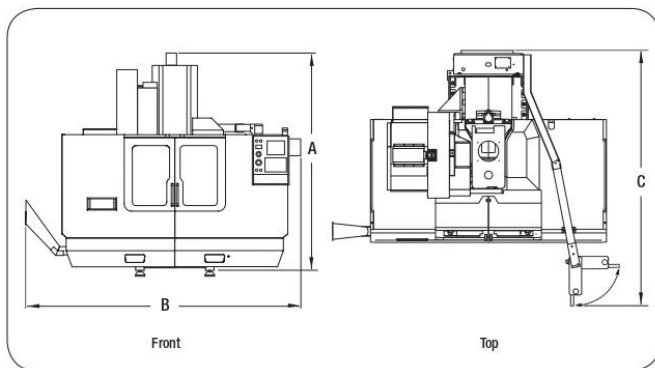
Each SS machine features a 12 000-rpm, inline direct-drive spindle, an ultra-fast side-mount tool changer and high-speed rapids on all axes. An optional 15 000-rpm spindle is available.



The Haas 12000-rpm, inline direct-drive spindle is coupled directly to the motor to reduce vibration, heat and noise. The 22,4 kW vector dual-drive system provides plenty of low-end torque, as well as the speed necessary for high-speed machining operations.



The fast rapids and quick tool changes of the SS machines increase throughput and reduce cycles times for economical high-volume production. The generous size of the T-slot tables easily accommodates multiple fixtures.



Operating Dimensions	VF-2SS	VF-3SS	VF-4SS	VF-5SS	VF-6SS
A. Max Operating Height	2794 mm	3 023 mm	3 023 mm	3 073 mm	3 378 mm
B. Max Operating Width	3 175 mm	3 886 mm	3 886 mm	4 013 mm	4 775 mm
C. Max Operating Depth*	2 515 mm	2 667 mm	2 667 mm	2 844 mm	3 098 mm

* With control swung forward. Additional 914 mm required to open rear service panel.

[Specifications]

Travels	VF-2SS	VF-3SS	VF-4SS	VF-5SS	VF-6SS
X	762 mm	1 016 mm	1 270 mm	1 270 mm	1 626 mm
Y	406 mm	508 mm	508 mm	660 mm	813 mm
Z	508 mm	635 mm	635 mm	635 mm	762 mm

Table

Length	914 mm	1 219 mm	1 321 mm	1 321 mm	1 626 mm
Width	356 mm	457 mm	457 mm	584 mm	711 mm
Max Weight on Table	680 kg	794 kg	794 kg	794 kg	907 kg

Spindle

Speed	12 000 rpm (15 000 rpm opt.)				
Drive System	Inline Direct Drive				
Max Rating	22,4 kW				
Max Torque	122 Nm @ 2 000 rpm				

Brushless Axis Motors

Max Thrust	X Axis	Y Axis	Z Axis
X Axis	8 874 N	13 723 N	13 723 N
Y Axis	8 874 N	13 723 N	13 723 N
Z Axis	13 723 N	17 450 N	17 450 N

Feedrates

Max Rapids	X Axis	Y Axis	Z Axis
X Axis	35,6 m/min	35,6 m/min	35,6 m/min
Y Axis	35,6 m/min	35,6 m/min	35,6 m/min
Z Axis	35,6 m/min	35,6 m/min	35,6 m/min
Max Cutting	21,2 m/min		

Tool Changer

Capacity	24+1	
Type	CT 40	
Max Tool Diameter	76 mm	
Tool to Tool	1,6 sec	2,3 sec
Chip to Chip	2,2 sec	3,2 sec

General

Power Required	354-488 VAC 3-Phase				
Weight	3 629 kg	5 670 kg	6 033 kg	6 623 kg	9 526 kg



Specifications subject to change without notice. Not responsible for typographical errors. Machines shown with optional equipment. Product appearance may differ.

EN.06/2016

Thank you very much for your interest

maschinen  Team



We do not guarantee the accuracy and completeness of these documents. We further do not assure any characteristics and qualities. The named machine, which is up for sale, is used.