

## Universal tool milling machine EMCO FB-6 TNC124



|                     |  |
|---------------------|--|
| Manufacture         | EMCO   |
| Type                | FB-6 TNC124  |
| Year of manufacture | 2005   |
| Machine number      | F4K T18 02   |
| Linear path control | HEIDENHAIN TNC 124<br>with handwheels for conventional use |
| Travels             | X – 700 mm / Y – 500 mm / Z – 500 mm                       |

## INDEX

|  |    |
|--|----|
| Equipment .....                                      | 3  |
| Technical data .....                                 | 4  |
| Prospect (Description, control and floor plan) ..... | 6  |
| Machine pictures .....                               | 11 |

## EQUIPMENT

hydraulic machine vice with rotary plate

various tool holders

Machine positioning elements

various tools

Coolant system

User guide / Documentation

All others accessories shown in the photos and video are not included in the scope of delivery, so they are not part of this sale. The scope of delivery only includes the accessories that are expressly listed here, in the offer, confirmation of order and invoice.

## TECHNICAL DATA

| Technical data                          | FB 6                        |
|---|-----------------------------|
| <b>Working range</b>                    |                             |
| Horizontal longitudinal feed (X)        | 700 mm (27.6")              |
| Vertical plate feed (Z)                 | 500 mm (19.7")              |
| Horizontal cross feed (Y)               | 500 mm (19.7")              |
| <b>Vertical plate clamping area</b>     |                             |
| Vertical plate clamping area            | 500 x 320 mm (19.7 x 12.6") |
| Width of T-grooves                      | 14 mm (H 8) (0.6" (H 8))    |
| Pitch/number of T-grooves               | 50 mm (2")/5 grooves        |
| Permissible workpiece weight            | Maximum 600 kg (1322.8 lb)  |
| <b>Rigid angle plate, clamping area</b> |                             |
| Rigid angle plate, clamping area        | 900 x 500 mm (35.4 x 19.7") |
| Width of T-grooves                      | 14 mm (H 8) (0.6" (H 8))    |
| Pitch/number of T-grooves               | 50 mm (2")/10 grooves       |
| Permissible workpiece weight            | Maximum 500 kg (1102.3 lb)  |
| <b>Horizontal milling spindle</b>       |                             |
| Tool chuck                              | DIN 69871 SK 40             |
| Mechanical speeds                       | 18                          |
| Speed range                             | 63–3150 rpm                 |
| Clearance above plate                   | 160–670 mm (6.3–26.4")      |
| <b>Swiveling vertical milling head</b>  |                             |
| Tool chuck                              | DIN 69871 SK 40             |
| Quill travel                            | 100 mm (3.9")               |
| Swiveling vertical milling head         | +/- 90°                     |
| Mechanical speeds                       | 18                          |
| Speed range                             | 63–3150 rpm                 |
| Clearance above plate                   | 80–590 mm (3.1–23.2")       |



|  |  |
|--|--|
| <b>Milling spindle drive</b>               |  |
| Power                                      | AC main motor<br>100%/40% ED, 5/6,6 kW<br>(6.7/8.9 hp) |
| <b>Feed drive</b>                          |  |
| Feed                                       | 18 mechanical feeds                                    |
| Feed range, X and Y/Z axes                 | 16 – 800/8 – 400 mm/min<br>(0.6 – 31.5/0.3 – 15.7 ipm) |
| Rapid traverse in X and Y/Z axes           | 3000/1500 mm/min<br>(118.1/59.1 ipm)                   |
| <b>Coolant system</b>                      |  |
| Coolant in tank                            | 40 liters (10.6 gal)                                   |
| <b>Central lubrication</b>                 |  |
|  | 2-circuit automatic                                    |
| <b>Tool chucking</b>                       |  |
|  | Hydraulic  |
| <b>Electricity supply</b>                  |  |
| Voltage supply                             | 400 V/3/PE/50 Hz                                       |
| <b>Machine dimensions</b>                  |  |
| Overall length                             | 2115 mm (83.3")  |
| Overall width                              | 2220 mm (87.4")  |
| Overall height                             | 2120 mm (83.4")  |
| Weight of machine                          | 2550 kg (5621.7 lb)                                    |
| <b>Sound pressure level</b>                |  |
| Maximum sound pressure level to DIN 45 635 | 80 dB(A)   |

# MACHINE PROSPECT

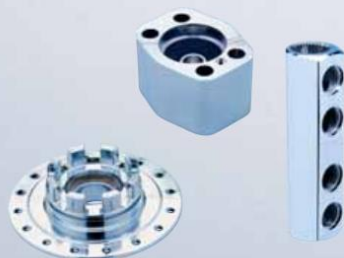
(Illustration and technical data similar. Are not binding)



## EMCOMILL series

Universal tool milling machines.

Manual or program-controlled - for all applications.



**emco** group  
Designed for your profit



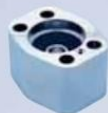
## EMCOMILL FB 5/FB 6. A strong team.

| Technical data          |  | FB 5                                |
|-------------------------|--|-------------------------------------|
| Angle plate             |  | 800 x 400 mm (31.5 x 15.7")         |
| X/Y/Z                   |  | 600/400/400 mm<br>(23.6/15.7/15.7") |
| Power (100/40%ED)       |  | 4/5,3 kW (5.4/7.1 hp)               |
| Tool clamping           |  | DIN 69871 SK 40                     |
| Hydraulic tool clamping |  |                                     |
|                         |  | FB 6                                |
| Angle plate             |  | 900 x 500 mm (35.4 x 19.7")         |
| X/Y/Z                   |  | 700/500/500 mm<br>(27.6/19.7/19.7") |
| Power (100/40%ED)       |  | 5/6,6 kW (6.7/8.9 hp)               |
| Tool clamping           |  | DIN 69871 SK 40                     |
| Hydraulic tool clamping |  |                                     |

The FB 5 and FB 6 models bring more strength to the global success story of the EMCOMILL machine series. The best of the newest features are longer working travel (with flat guides in three axes), hydraulic tool chucking and an external coolant system.



### Applications of the EMCOMILL FB 5/FB 6



Distributor  
(brass)



Wheel hub  
(steel)



Plunger  
(steel)

## Linear path control system HEIDENHAIN TNC 124 for the EMCOMILL FB 5 and FB 6

A linear path control system with the functional scope of the new TNC 124 allows you to manage simple manual projects. The machine axes are positioned using direction keys, or you have the option to key in a target position. The TNC 124 accounts for the length and radius of 99 different tools. It had standard cycles for cutting hole circles and hole channels for milling rectangular pockets. If you have more complex projects or part series, you have the opportunity to create an NC program.

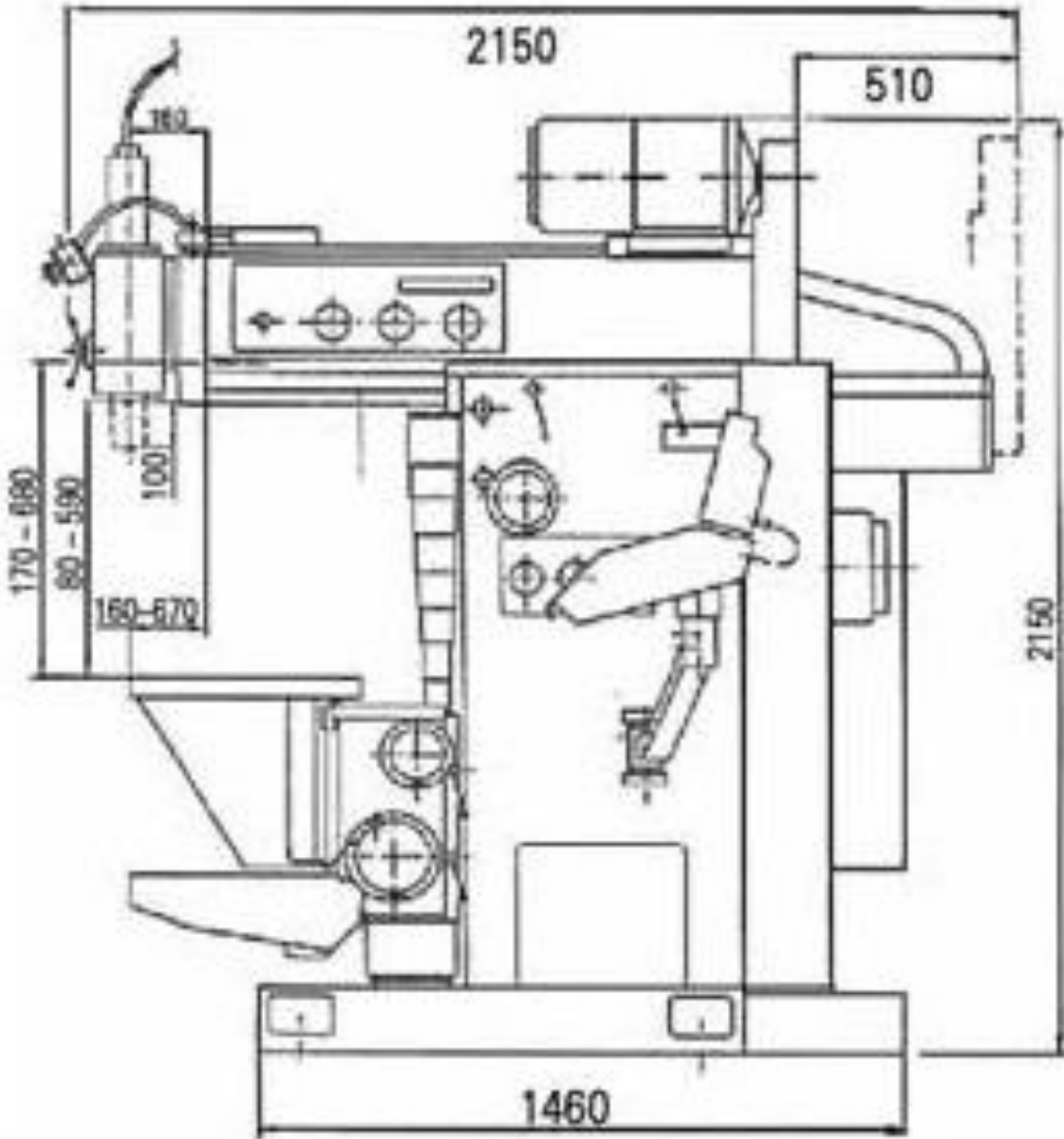




# MACHINE PROSPECT

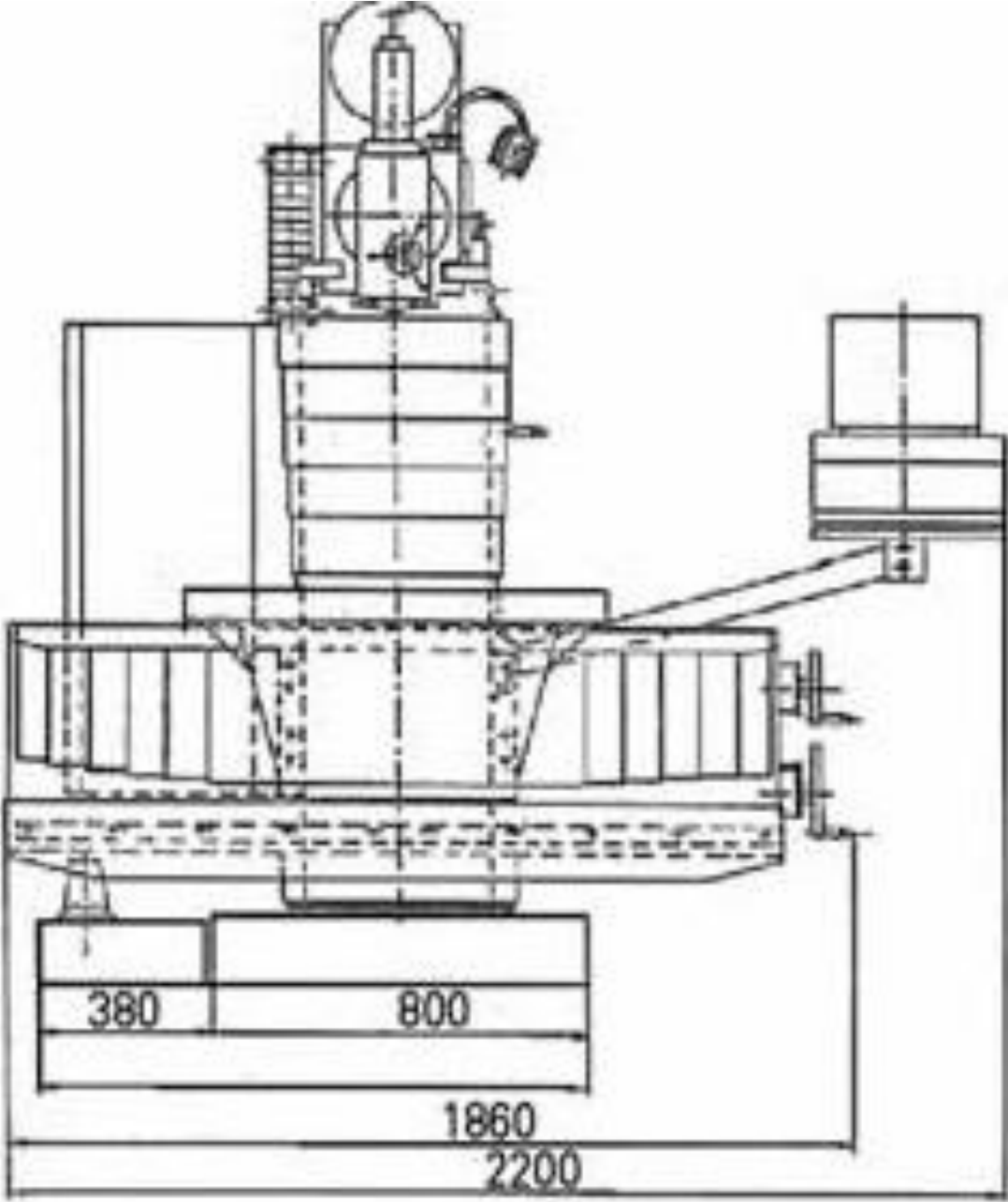
(Illustration and technical data similar. Are not binding)

## Floor plan EMCOMILL FB 6



# MACHINE PROSPECT

(Illustration and technical data similar. Are not binding)



## MACHINE PICTURES











*Thank you very much for your interest*

---

maschinen  Team



\*We do not guarantee the accuracy and completeness of these documents. We further do not assure any characteristics and qualities. The named machine, which is up for sale, is used.\*