

## FASTEMS FPC-3000 FPC – flexible pallet container



Manufacture	FASTEMS
Type	FPC-3000
Year of manufacture	2015
Machine number	FC30015
Control	FASTEMS MMS 5 Version 3.0.8 (Manufacturing Management Software)

## INDEX

---

Equipment .....	3
Technical data .....	4
Machine layout .....	5
Drawings .....	6
Machine pictures .....	10

## Automate your milling machine

FPC is a fast-to-deploy and easy to use automation solution for milling machines with 400 to 1000 mm pallets. The high pallet capacity in a small footprint and various production scheduling options allow for high machine tool utilization and excellent lights out production capacity.

## EQUIPMENT

### FASTEMS

FPC is a flexible pallet container for automation for connection to any horizontal machining center constructed for 6 pallet storage positions for pallet size 1.000 mm x 1.000 mm.

including loading station

User guide / Documentation

Machine parameters on storage medium

without pallets

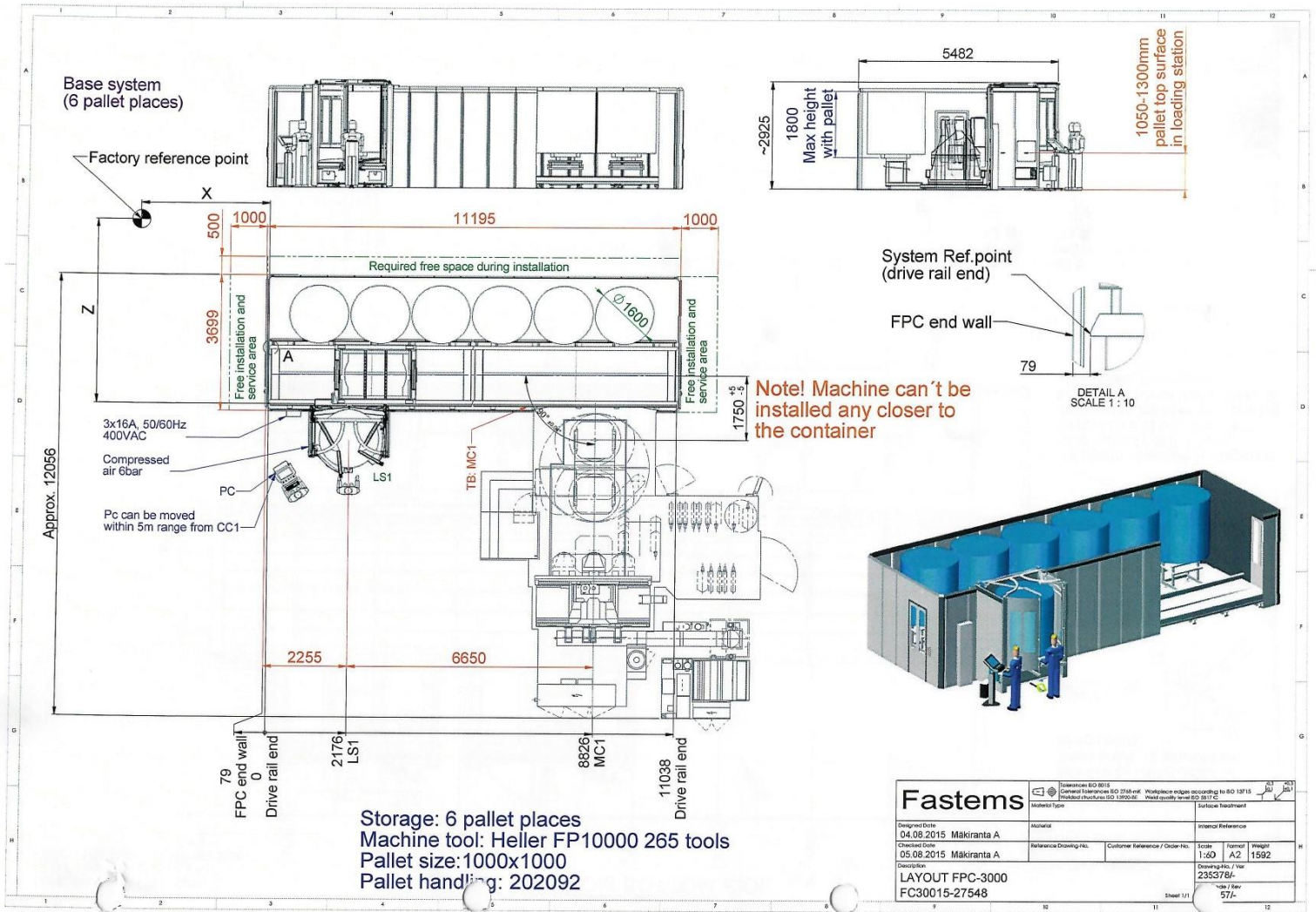
All others accessories shown in the photos and video are not included in the scope of delivery, so they are not part of this sale. The scope of delivery only includes the accessories that are expressly listed here, in the offer, confirmation of order and invoice.

## TECHNICAL DATA

Parameter	FPC-3000
Load weight, incl. pallet	3000
Nominal machine pallet size (mm)	1000×1000
Load size (X x Z mm)	Ø1600
Load rotational diameter (Ø mm)	1600
Load height, incl. pallet (H mm)	1800
Storage capacity by container unit	6
Length, base container (mm)	11500
Length, extension container (mm)	11500
Width (mm)	3600
Height, container (mm)	2900
Maximum height (mm)	2900
Control software	

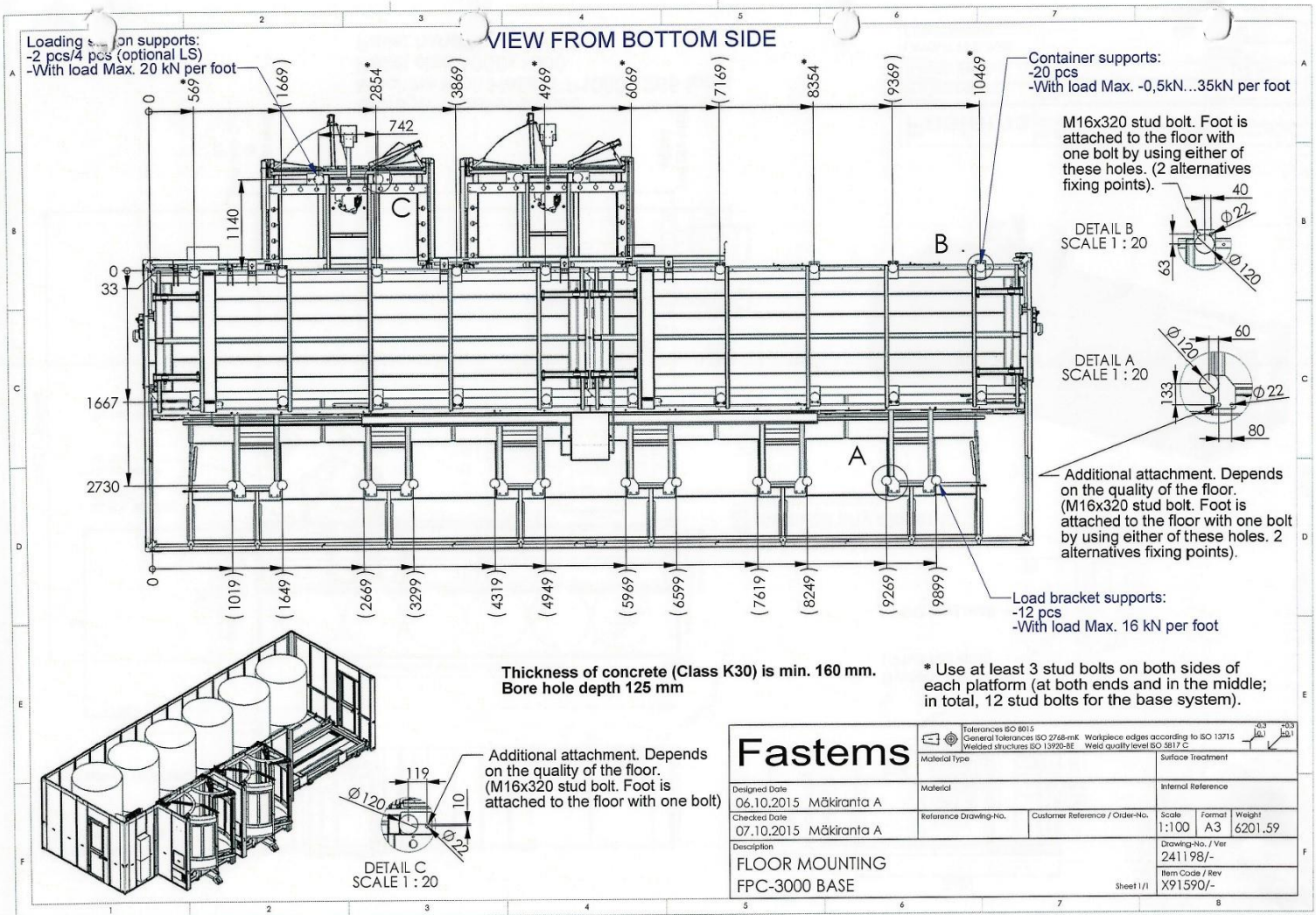


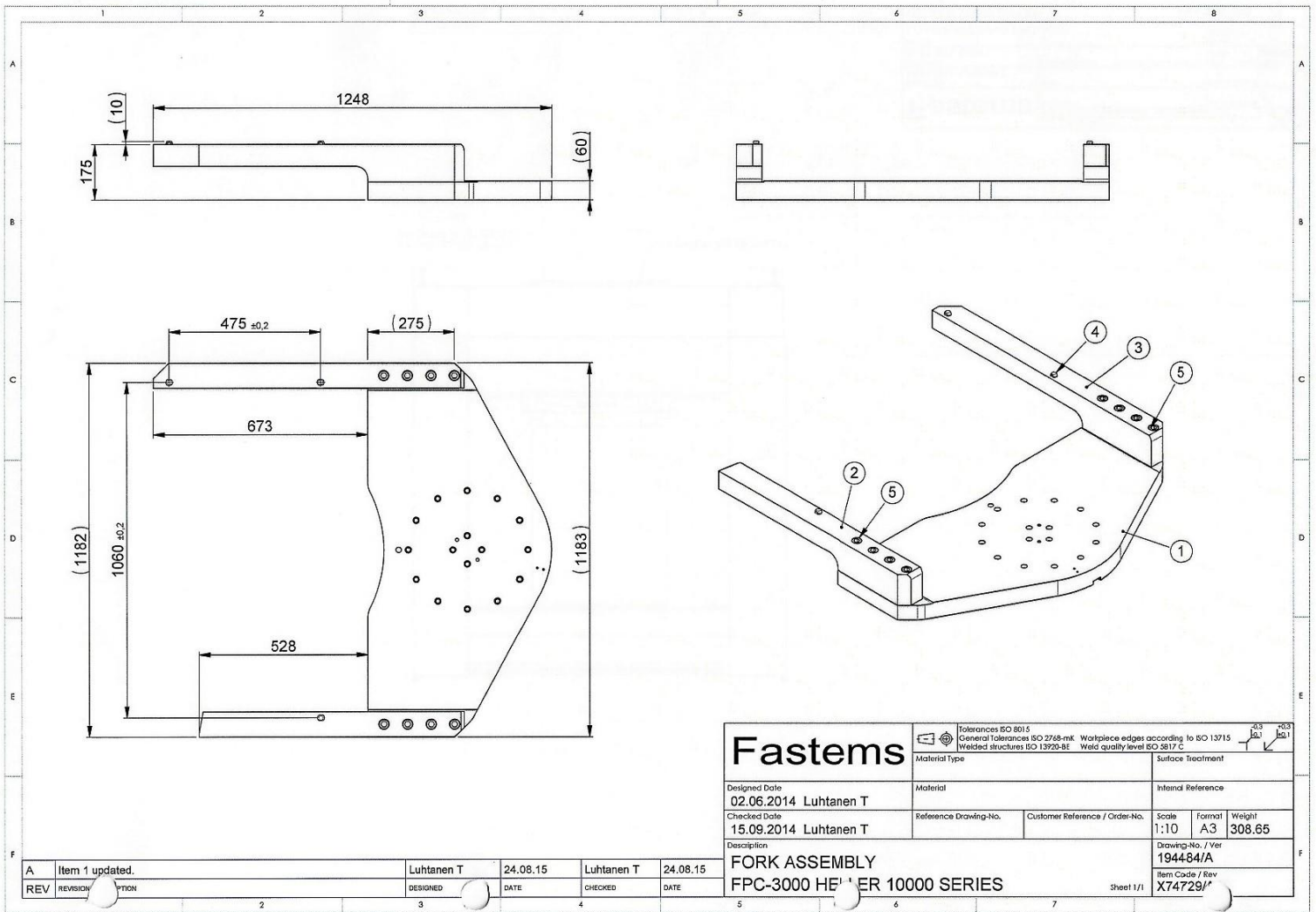
# DRAWINGS



<b>Fastems</b>		Normen ISO 9018 Central Fastems AG 2768-01 Prüfmaß: DIN 1500-01		Werkstücke gefertigt nach ISO 13115 Werkstoff: S235JR Werkstoffqualität: S235JR	
Design-Datum:	04.08.2015	Maßstab:	1:50	Form:	A2
Gezeichnet:	Makiranta A	Referenz-Drawing-Nr.:	235378/	Werkstück-Nr.:	57/-
Geprüft:	05.08.2015	Kunden-Referenz / Order-Nr.:	LAYOUT FPC-3000	Blatt:	1/1
Gezeichnet:	Makiranta A	Customer Reference / Order No.:	FC30015-27548	Rev.:	57/-
Geprüft:	05.08.2015	Customer Reference / Order No.:	FC30015-27548	Rev.:	57/-
Gezeichnet:	Makiranta A	Customer Reference / Order No.:	FC30015-27548	Rev.:	57/-





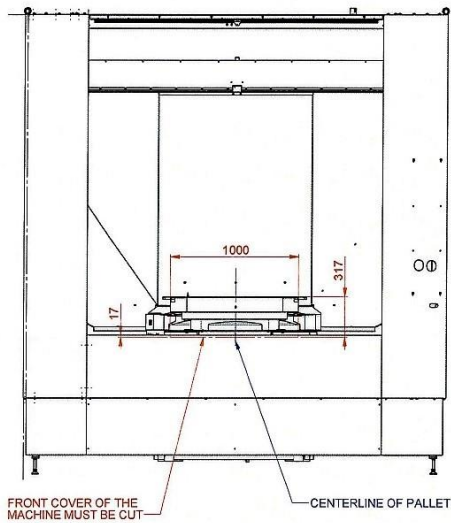


<b>Fastems</b>		Tolerances ISO 8015 General Tolerances ISO 2768-mK Welded structures ISO 13920-BE		Workpiece edges according to ISO 13715 Weld quality level ISO 3817 C		4:3 2:1 1:1
Material Type		Material		Surface Treatment		
Designed Date 02.06.2014 Luhtanen T		Reference Drawing-No.		Customer Reference / Order-No.		Inland Reference
Checked Date 15.09.2014 Luhtanen T		Description FORK ASSEMBLY FPC-3000 HE FORK 10000 SERIES		Scale 1:10	Format A3	Weight 308.65
Drawing-No. / Ver 1944-84/A		Item Code / Rev X74729/A		Sheet 1/1		

A	Item 1 updated.	Luhtanen T	24.08.15	Luhtanen T	24.08.15
REV	REVISION	DESIGNED	DATE	CHECKED	DATE



MACHINE MODIFICATIONS



<b>Fastems</b>		<small>                 Tolmocon ISO 9013                  Corrosion resistance ISO 2768-mf                  Welded structures ISO 13555-BE                  Workpiece edges according to ISO 13715                  Weld quality level ISO 387-C             </small>		<small>                 10                  10                  10             </small>
<small>                 Design/Date                  15.09.2014 Luhtanen T             </small>		<small>                 Material:                  Reference Drawing No.             </small>		<small>                 Internal Reference                  Scale                  Format                  Weight             </small>
<small>                 Checked/Date                  24.09.2014 Ritala J             </small>		<small>                 Customer Reference / Order No.             </small>		<small>                 Drawing No. / Ver.                  202092/A             </small>
<small>                 Description:                  LOAD HANDLING FPC-3000                  HELLER 10000 SERIES             </small>		<small>                 Item Code / Rev.                  X77164/A             </small>		<small>                 Sheet 2/2             </small>

A	BOM updated.	Luhtanen T	24.08.15	Ritala J	25.08.15
REV	REVISION/DESCRIPTION	DESIGNED	DATE	CHECKED	DATE

## MACHINE PICTURES



*Thank you very much for your interest*

---

maschinen  Team



\*We do not guarantee the accuracy and completeness of these documents. We further do not assure any characteristics and qualities. The named machine, which is up for sale, is used.\*