

Vertical machining center DECKEL MAHO DMU 50 T Axes 3 + 2



Manufacture	DECKEL MAHO
Modell	DMU 50 T / Axes 3 + 2
Year of manufacture	1997
Machine number	550069
Control	3D MillPlus
Travels	X – 500 mm / Y – 400 mm / Z – 400 mm
Manual swivel rotary table with digital display for C+B axes	

INDEX

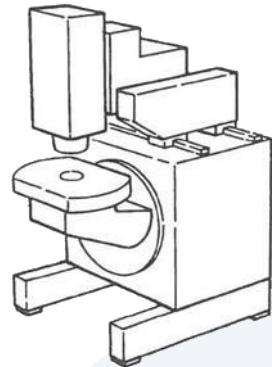
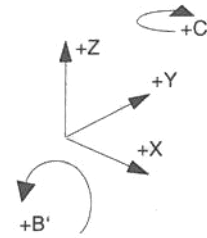
Technical data	3
Equipment	4
Tool shank - Dimensions	5
Floor plan	6
Working area	7
Machine support	8
Machine pictures	9

TECHNICAL DATA

Working area

X x Y x Z-axes

500 x 400 x 400 mm



Main drive 9.000 rpm

AC servo motor

Torque at the spindle available

efficiency included, see diagram

Motor power at 100% DC

9 kW

Motor power at 40% DC

13 KW

Speed, stepless programmable

20 – 9.000 rpm

Feed drive

AC servo motors

for axes X, Y, Z

Feed speed, stepless

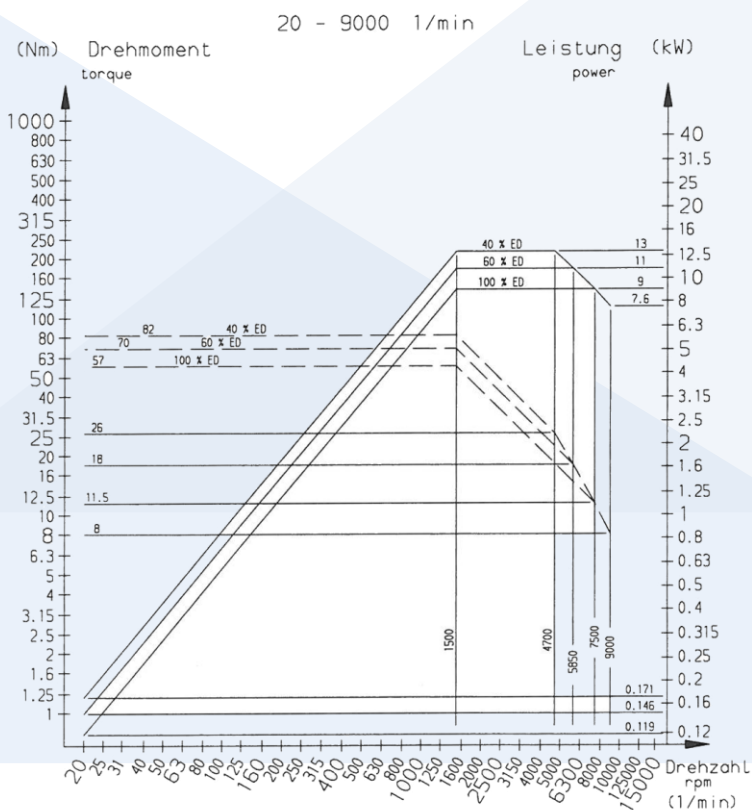
X-,Y-,Z-axes to 10.000 mm/min

Rapid traverse X-, Y-, Z-axes

12 m/min

Input resolution

X-,Y-,Z-axes 0,01 mm



Measuring system

Resolution X-, Y-, Z-axes 0,001 mm

Working spindle

Tool holder Short taper cone SK40 DIN 69871

Tool clamping pneumatic/mechanic

Pull studs DIN 69 872 o. ISO 7388/2, Type B

Tool changer with magazine

Magazine places 16 pieces

Max. tool length from spindle nose 290 mm

Max. tool weight with automatic tool change: 6 kg

Max. tool total weight in magazine 50 kg

Rotary table with swivel axis

Clamping surface Ø 700 x 500 mm

Distance / size of the T-grooves 63 mm / 14H7

Centering bore Ø 30 H6 mm

Rotating range 360°

Table plates clamping mechanic

Swivel range +95° / -10°

Permissible loading 200 kg

EQUIPMENT

Manual swivel rotary table with digital display for C + B axes

Vertical tool changer with 16 magazine places

Coolant device

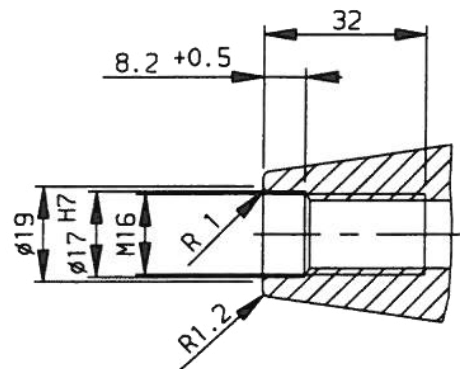
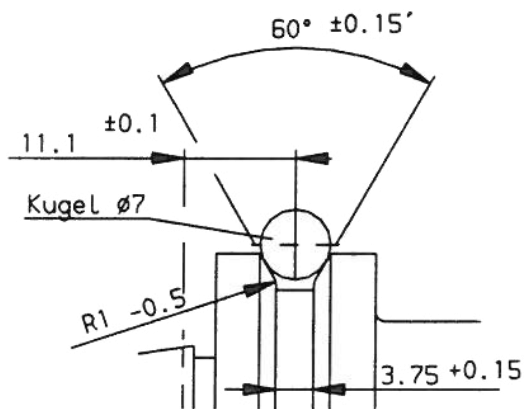
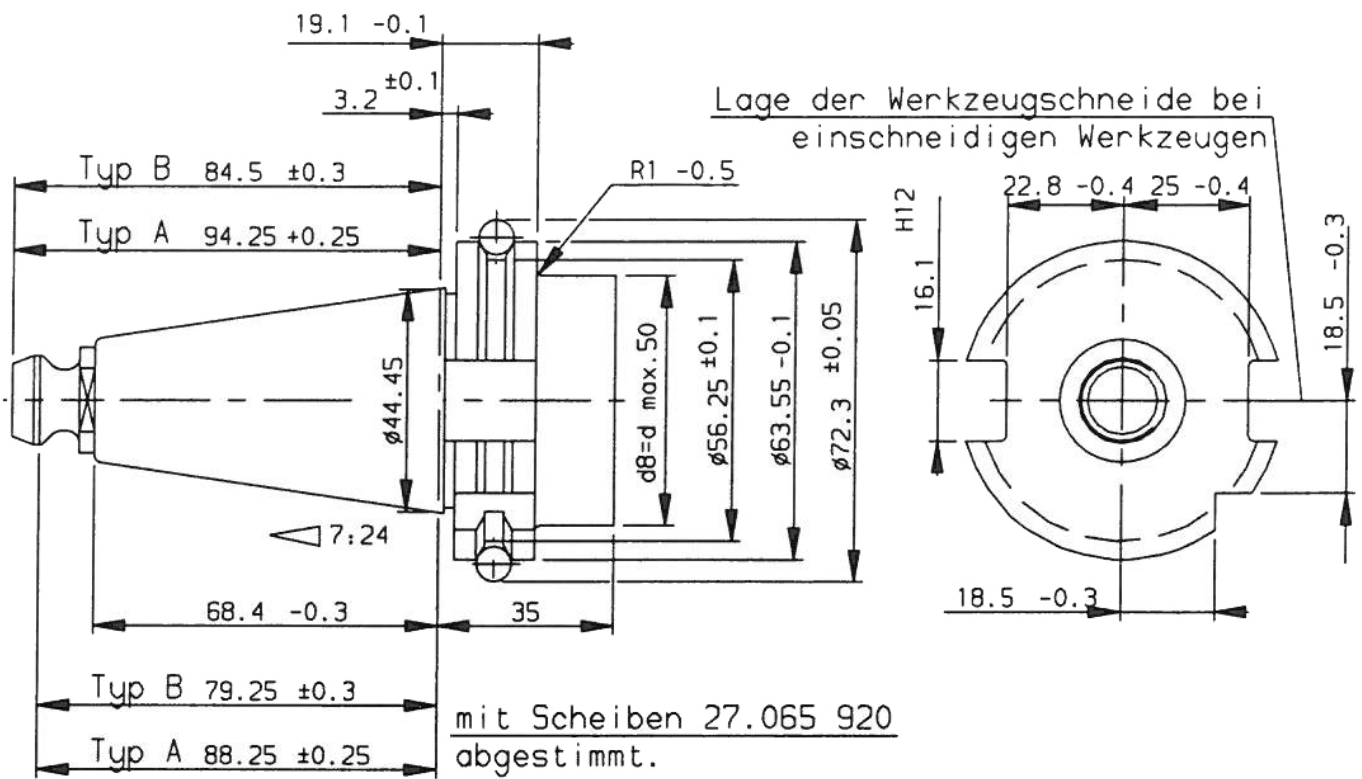
Protection cabin with internal lighting

User manual / Documentation

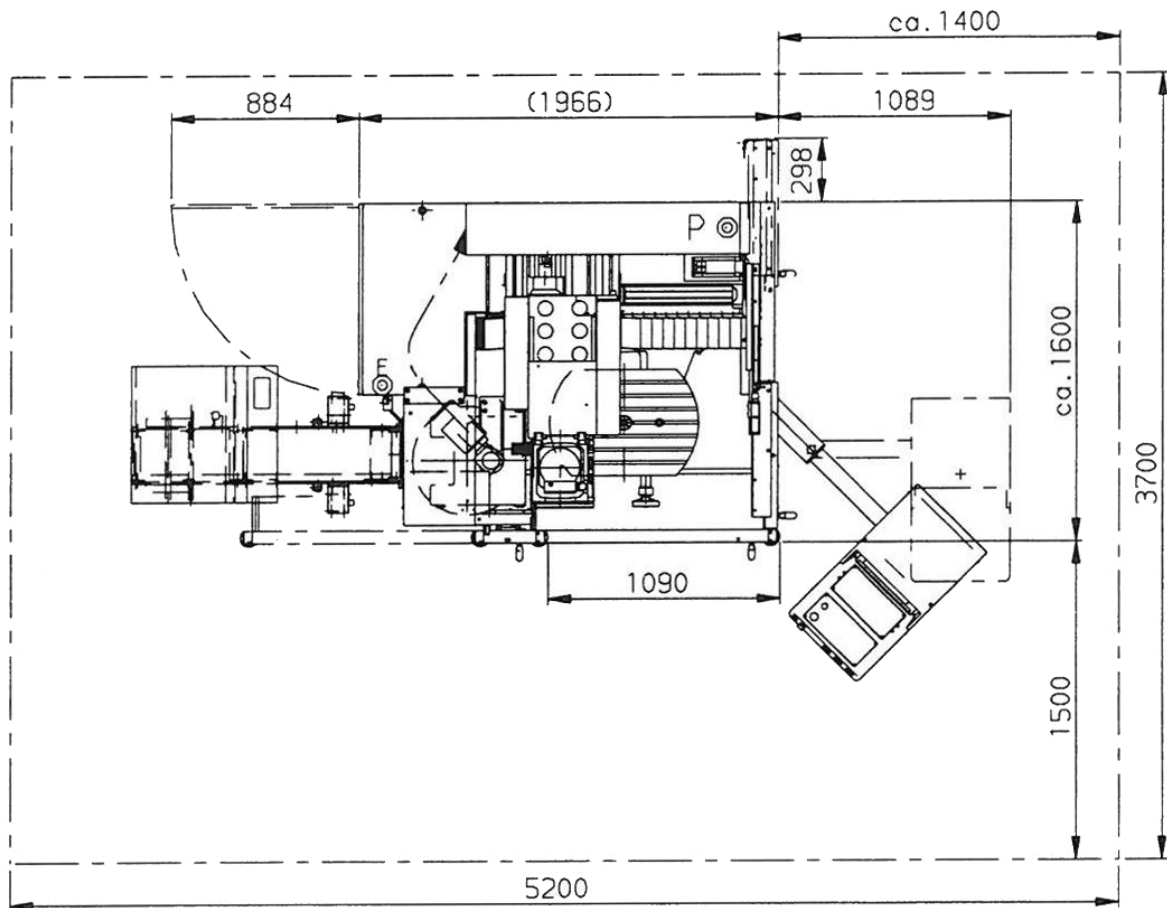
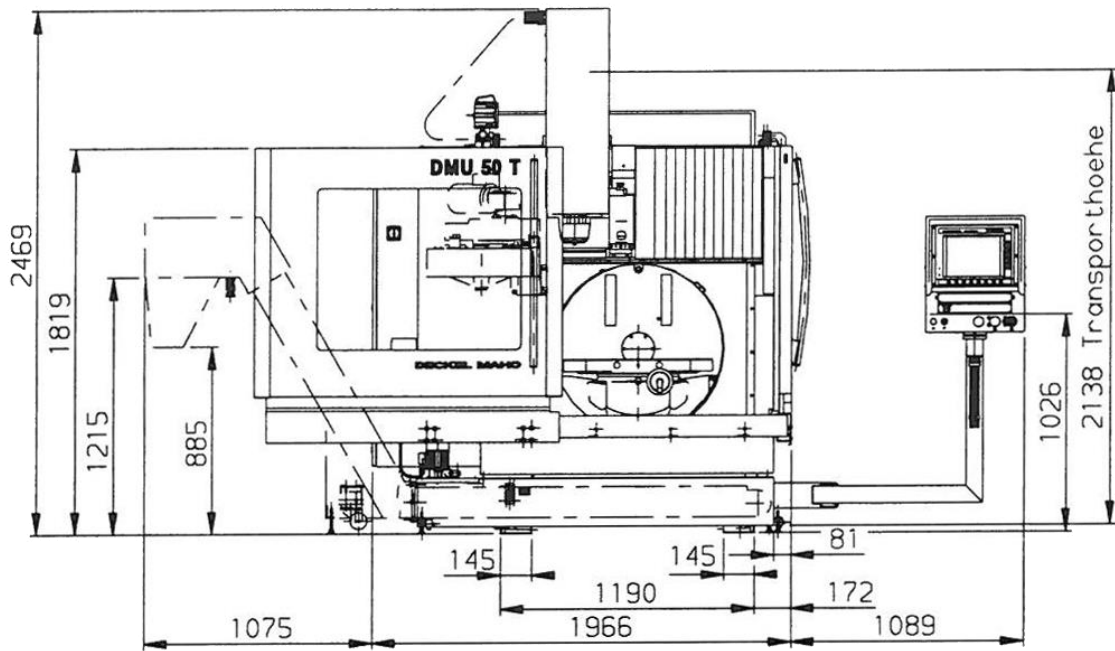
All others accessories shown in the photos and video are not included in the scope of delivery, so they are not part of this sale. The scope of delivery only includes the accessories that are expressly listed here, in the offer, confirmation of order and invoice.

TOOL SHANK - Dimensions

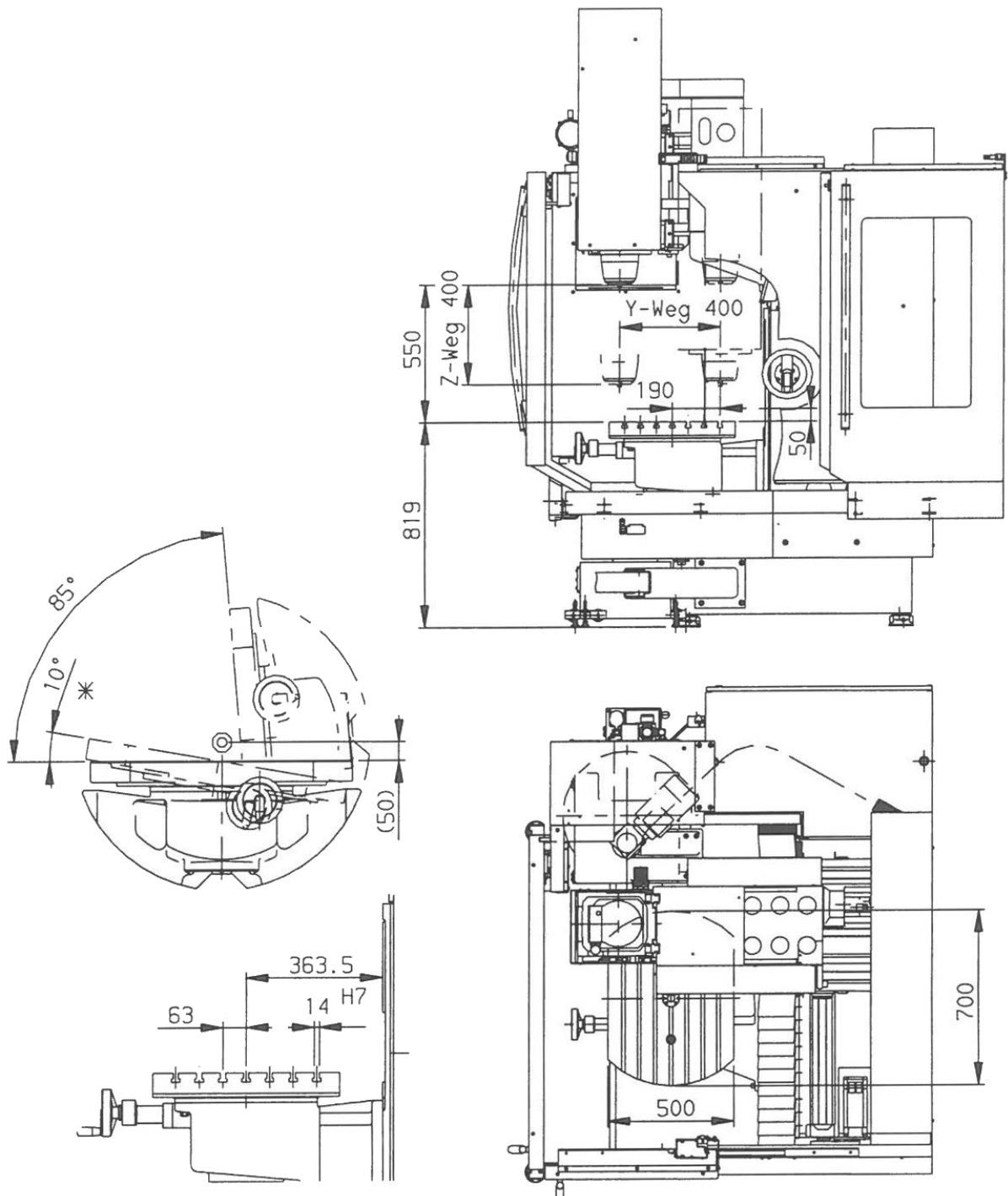
Steilkegelschaft SK 40 DIN 69871 mit Anzugsbolzen ISO 7388/2 Typ B oder DIN 69872 Form A



FLOOR PLAN



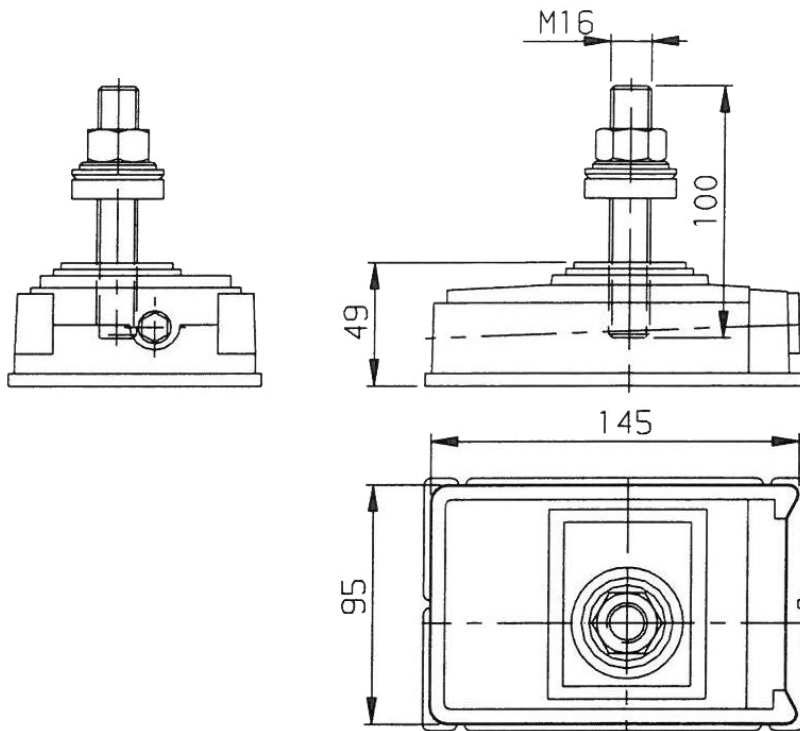
WORKING AREA



*** KOLLISIONSGEFAHR !**

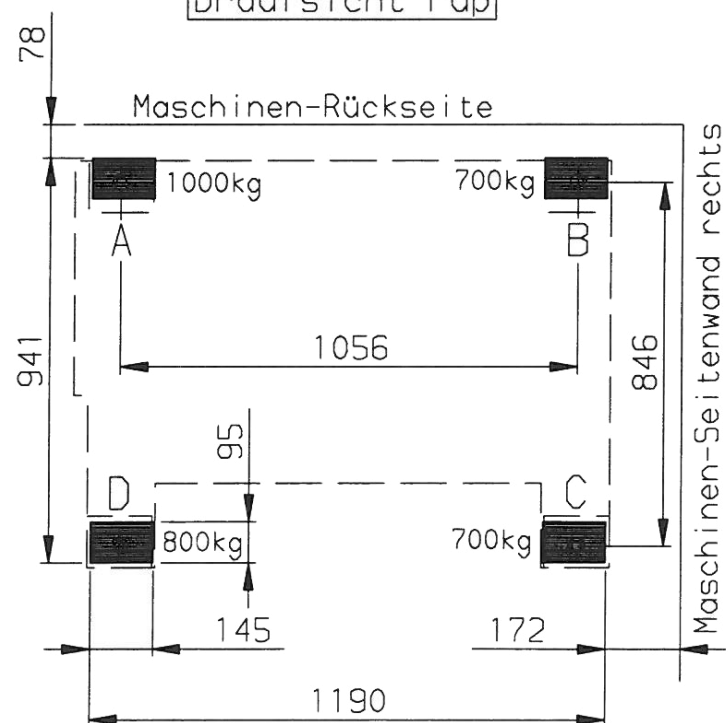
Durch Anbau des Meßtasters TT130 ist der Schwenkbereich der B-Achse von 0 bis -10° nicht nutzbar!

MACHINE SUPPORT



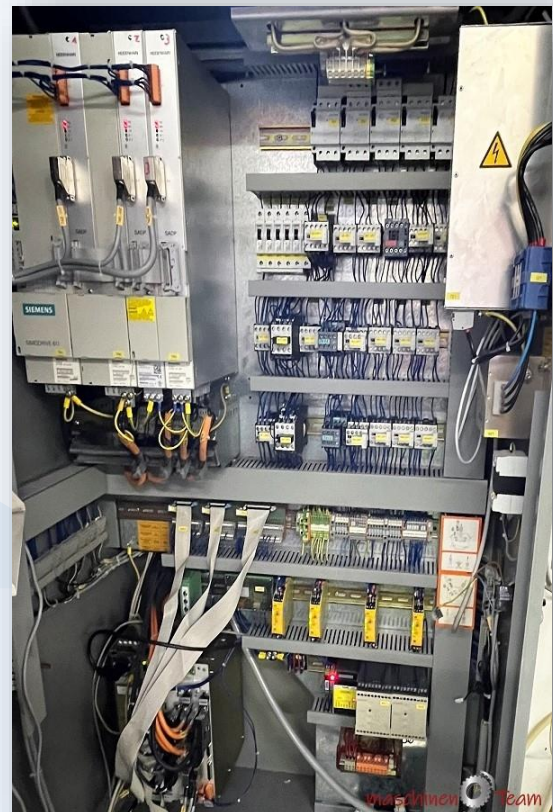
GS 41 + TK 8
Nr. 2634 90 SHORE

Draufsicht Fuß



MACHINE PICTURES





Thank you very much for your interest

maschinen  Team



We do not guarantee the accuracy and completeness of these documents. We further do not assure any characteristics and qualities. The named machine, which is up for sale, is used.