

NC universal console milling machine RECKERMANN 1000 KOMBI



Manufacture	RECKERMANN
Type	1000 KOMBI
Year of manufacture	1999
Machine number	7043
Control	Route control HEIDENHAIN TNC 124 E
Travels	X – 1.200 mm / Y – 650 mm / Z – 450 mm
Milling head	double swivelling $\pm 45^\circ$ / $\pm 90^\circ$

Equipment	3
Technical data	4
Installation plan	6

Electrical tool feed

Milling head double swivelling $\pm 45^\circ / \pm 90^\circ$

Electronic hand wheel

Horizontal counter bearings

Coolant device

Machine lighting

User guide / Documentation

Machine parameters

All others accessories shown in the photos and video are not included in the scope of delivery, so they are not part of this sale. The scope of delivery only includes the accessories that are expressly listed here, in the offer, confirmation of order and invoice.

Working area, automatically driven

Travel longitudinal (X-axis)	1.200 mm
Travel cross (Y-axis), manual	650 mm
Travel cross (Y-axis), automatically driven	350 mm
Travel vertical (Z-axis)	450 mm

Milling table

Lenght x Width	1.570 x 400 mm
Number of T-grooves	5
Grooves width (acc. to DIN 650): middle groove / chip groove	18 ^{H7} / 18 ^{H9}
Grooves distance	70 mm
Max. workpiece weight	500 kg

Column

Drive power at 100% DC	6,1 / 7,4 kW
Adjustable speeds	48 – 2.100 min ⁻¹
Tool holder (according to DIN 2079)	ISO 40

Headstock

Drive power at 100% DC	6,1 / 7,4 kW
Adjustable speeds, gear shift	48 – 2.100 min ⁻¹
Tool holder (according to DIN 2079)	ISO 40
Quill adjustment - vertical	120 mm

Swings

Lower edge of vertical spindle to table	0 – 550 mm
Center vertical spindle to column	50 – 500 mm
Center horizontal spindle to table	0 – 450 mm
Center horizontal spindle to lower edge headstock housing	145 mm

Feeds and rapid traverse

Continuous feed X-,Y-axis	10 – 3.000 mm/min
Continuous feed Z-axis	4 – 400 mm/min
Rapid traverse X-,Y, Z--axis	6.000 mm/min
Feed force central drive	22 Nm

Space requirement

Packaging dimensions of the machine (L x W x H), approx.	1.900 x 2.500 x 2.200 mm
----------------------------------------------------------	--------------------------

Weight of the machine

Machine weight (incl. cabinet)	4.500 kg
Cabinet weight	300 kg

Electrical connection

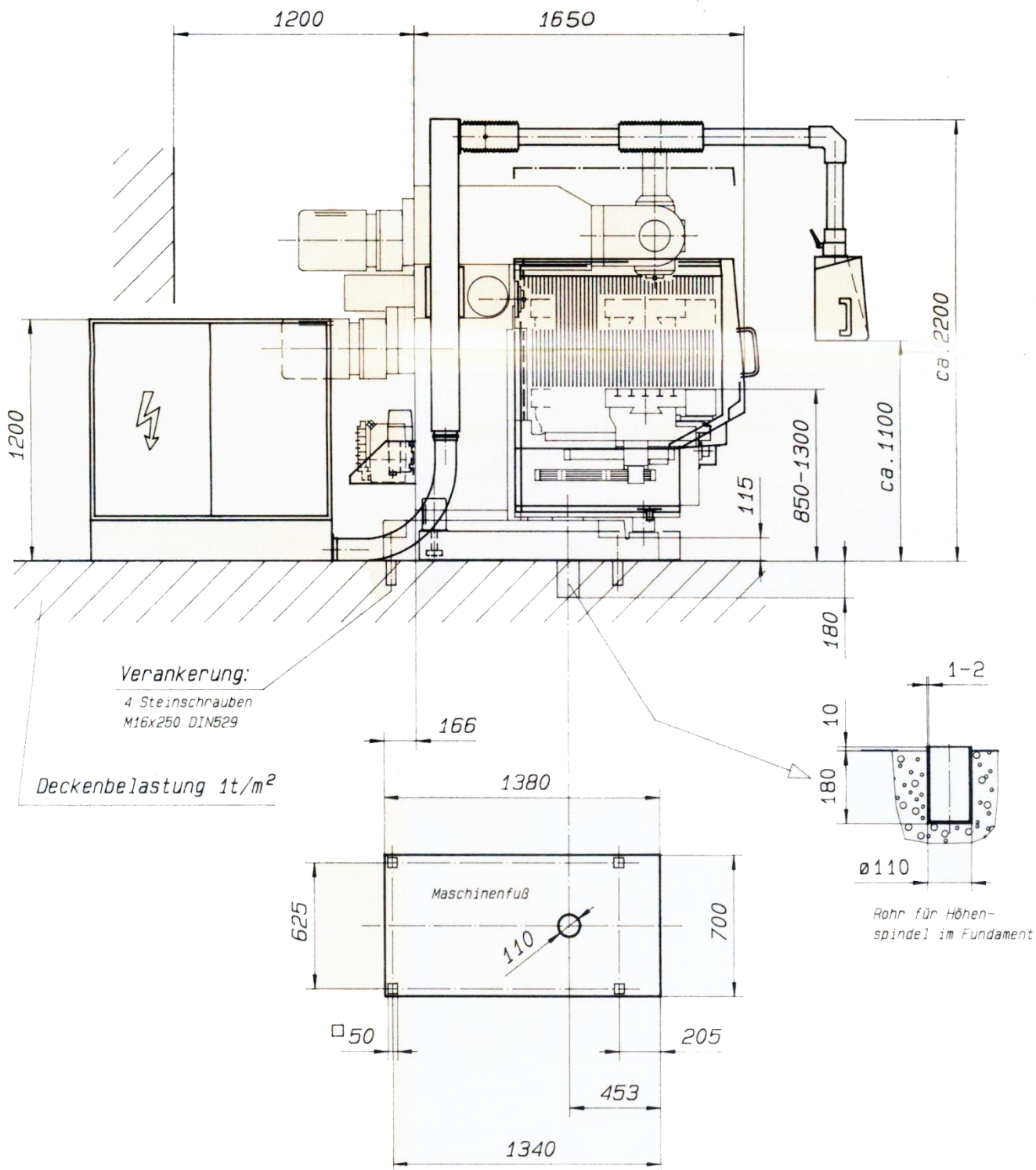
Operating voltage	400 V
Control voltage (via transformator)	230 / 24 V
Frequency and total rated power	50 Hz / 40 A
Protection of the supply line	50 A

Workplace related emission limit

Noise emission of the machine at 2.000 min ⁻¹ L _{pA}	acc. To DIN 45635, part1605 81,5 db(A)
Working noise of the machine at 360 min ⁻¹ 65% ED L _{pA}	78 db(A)

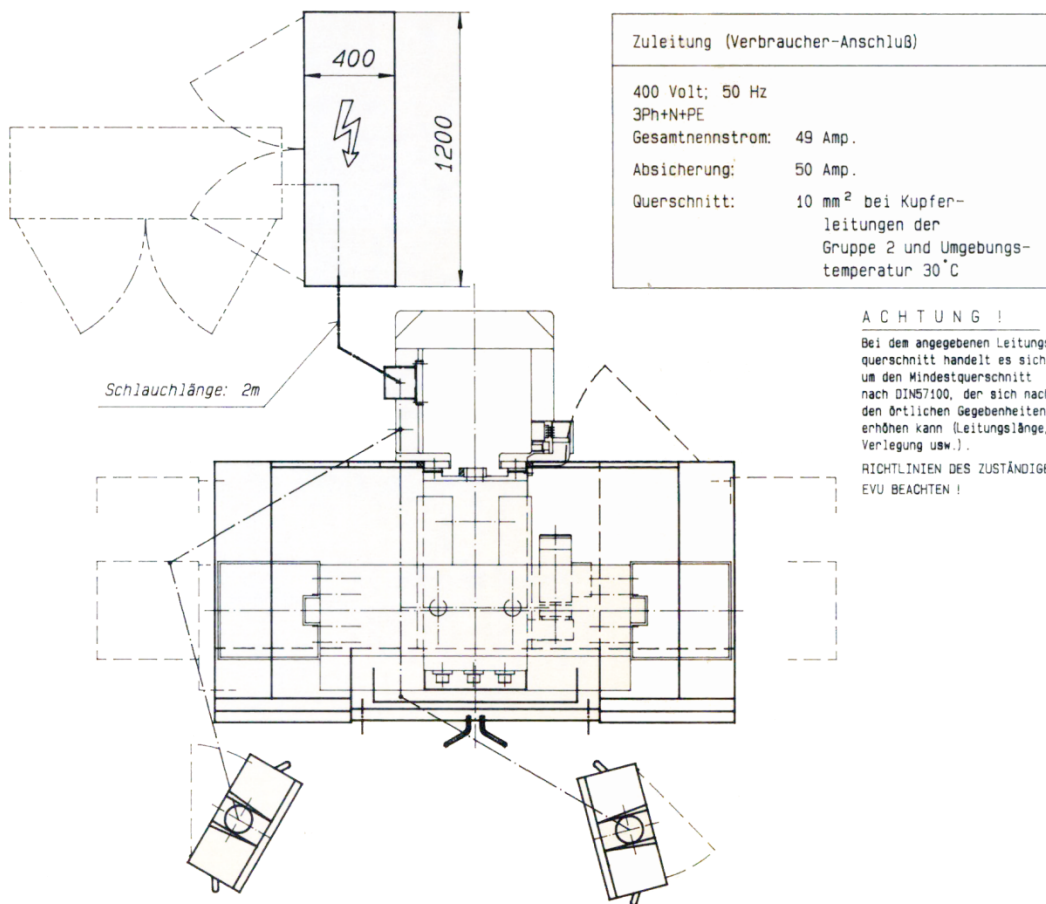
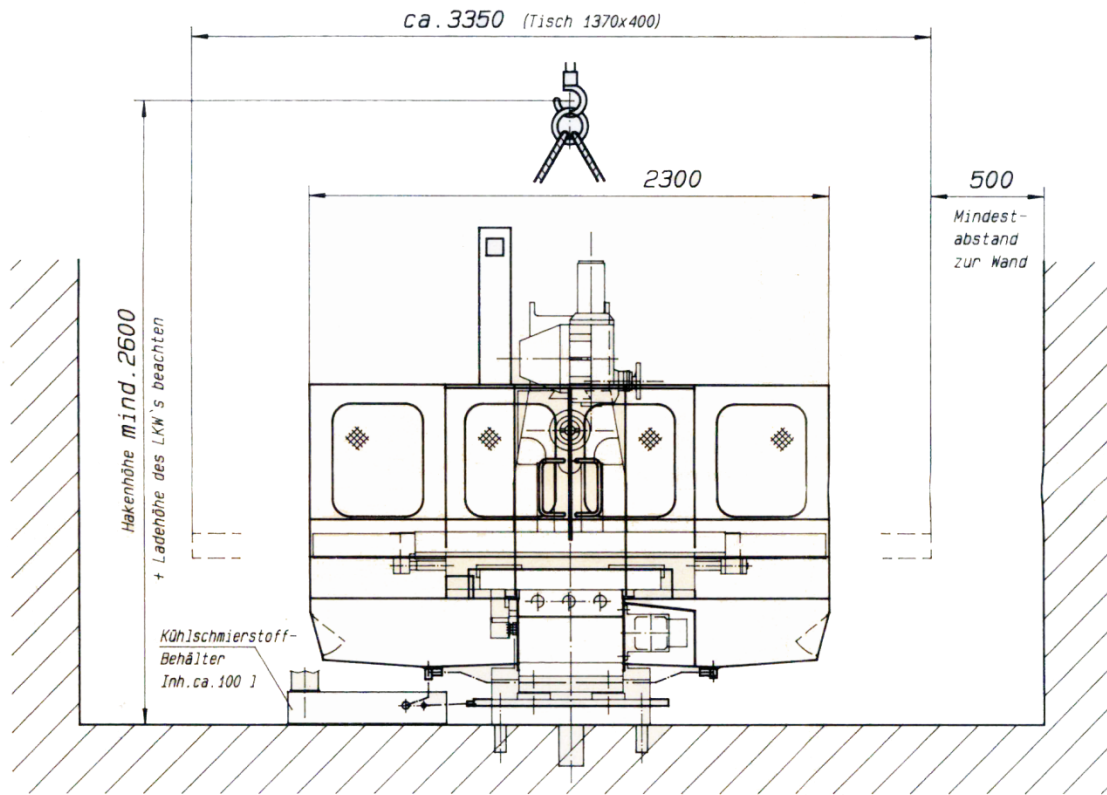
INSTALLATION PLAN

(Illustration and technical data similar. Are not binding)



INSTALLATION PLAN

(Illustration and technical data similar. Are not binding)



Thank you very much for your interest

maschinen  Team



We do not guarantee the accuracy and completeness of these documents. We further do not assure any characteristics and qualities. The named machine, which is up for sale, is used.